

LANTRONIX®



XPort AR Getting Started

Introduction

Use this Getting Started guide as a reference to install and configure your XPort AR. It will step you through hardware installation and configuration.

The XPort AR requires an IP address for network communications. There are three methods to assign the IP address:

1. DHCP: When connected to a DHCP-enabled network, XPort AR obtains an IP address automatically. By default, the XPort AR is DHCP-enabled.
2. CLI: The IP address is configurable through the XPort AR's Command Line Interface (CLI) using a DB9 null modem serial cable. This cable is provided with the XPort AR evaluation kit.
3. DeviceInstaller: This utility allows you to search for the device and change the IP address to a static address (if required). DeviceInstaller is located on the XPort AR product CD.

Use option #2 when DHCP is not enabled on your network or if you are not connected to a network.

Setting the IP Address

Note: For detailed video instructions, refer to the XPort AR product CD. It contains a video tutorial with step-by-step instructions to configure the IP address using option #3 (through the CLI using a serial cable).

IP Address

The XPort-AR must have an IP address that is unique on your network. The systems administrator generally provides the IP address, subnet mask, and gateway. The IP address must be within a valid range, and in the same subnet as your PC.

IP Address: _____

Subnet Mask: _____

Gateway: _____

The XPort AR is DHCP-enabled by default.

To assign an IP address using the serial port:

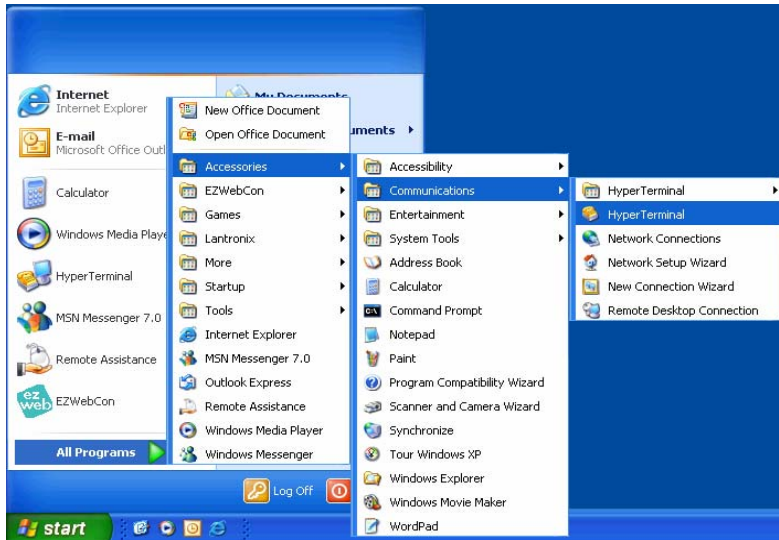
Note: The CLI is the industry standard mechanism for securely entering an IP address into any networking device

1. Connect one end of the null modem cable (below) to your PC's serial port.



2. Connect the other end of the null modem cable to port 1 of the XPort AR evaluation board.
3. Open a terminal emulation program to access the CLI. This guide covers accessing the CLI using HyperTerminal.

To open HyperTerminal, click **Start → Programs → Accessories → Communications → HyperTerminal**.



4. In the Connection Description window, enter a name for this connection.



5. In the Connect To window, select **COM1** from the **Connect Using** drop-down menu.

Note: If the connection fails, try using **COM2** instead.



6. Configure the COM1 Properties Window to the following settings:

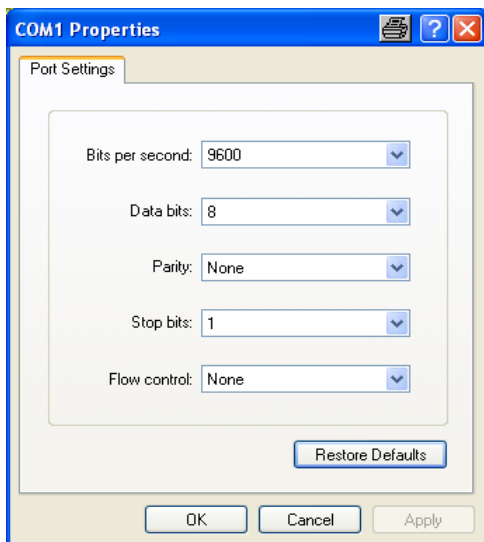
Bits per second: 9600

Data Bits: 8

Parity: None

Stop Bits: 1

Flow Control: None



7. To get to the XPort AR's CLI, power on the XPort AR while holding down the **Shift** key and the exclamation key on the keyboard. Hold the keys down until the XPort AR displays an exclamation.
8. After the exclamation point is displayed, type "**xyz**". The XPort AR displays ">". This is the root level of the CLI.

The XPort AR's CLI is made up of multiple levels in a tree-like structure. The root level is the top of the CLI tree with multiple sub-levels below.

Any commands used to change settings on the XPort AR are located in the **Enable** level of the CLI or one of its sub-levels.

9. Type:

enable

Press **Enter**. The Enable level menu displays.

10. Type:

config

Press **Enter**. The Config level menu displays.

11. Type:

if 1

Press **Enter**. This opens the **Interface 1** level of the CLI. This level of the CLI is used to configure settings related to the Ethernet interface on the XPort AR

12. To set the IP address and subnet mask, type:

ip address <ip address> <subnet mask>

Press **Enter**.

13. To set the gateway, type:

ip default-gateway <gateway address>

Press **Enter**.

14. To disable DHCP, type:

no dhcp

Press **Enter**.

Note: *If your network is running DHCP and you want to use a static IP address on the XPort AR, you must disable DHCP from the CLI.*

15. Save changes, type:

write

Press **Enter**.

The XPort AR is now set to use a static IP address, subnet mask, and gateway. The changes take affect after the unit is rebooted. Cycle the power to reboot.

Installing DeviceInstaller

1. Open DeviceInstaller on the CD-ROM.

If the CD does not launch automatically:

- a. Click the **Start** button on the Task Bar and select **Run**.
- b. Enter your CD drive letter, colon, backslash, **Launch.exe** (e.g., D:\Launch.exe).

2. Respond to the installation wizard prompts.

Note: *For more information about DeviceInstaller, see the DeviceInstaller online help.*

Configuration using Web Manager

In this Quick Start Guide, we briefly describe how to configure the XPort AR using Web Manager, Lantronix's browser-based configuration tool. For detailed information on Web Manager configuration and on other methods, please see the *XPort AR User Guide*.

1. Using DeviceInstaller, select the unit and select the **Web Configuration** tab.
2. Click **Go**. The XPort AR Web Manager window displays in the DeviceInstaller window.

Note: You can also open a web browser and enter the IP address of the XPort AR to open Web Manager.

The screenshot shows the Lantronix Web Manager interface. The top left features the Lantronix logo, and the top right says "Web Manager". A left-hand navigation menu includes items like Status, Network, Line 1, Line 2, Tunnel 1, Tunnel 2, CPM, SSH, SSL, CLI, HTTP, XML, Email, Filesystem, Diagnostics, and System. The main content area is titled "XPort Status" and contains several tables of configuration data.

Product Information	
Product Type:	Lantronix XPort AR
Firmware Version:	1.0.0.0RC2
Serial Number:	Sabina1
Uptime:	0 days 00:00:20
Permanent Config:	Saved

Network Settings	
Ethernet:	Auto (100Mbps Full)
MAC Address:	00:20:4a:00:59:54
Host:	<NotSet>
IP Address:	172.18.100.27 / 255.255.0.0
Default Gateway:	0.0.0.0
Domain:	<NotSet>
Primary DNS:	<NotSet>
Secondary DNS:	<NotSet>

Line Settings	
Line 1:	9600, N, 8, 1, None
Line 2:	9600, N, 8, 1, None

Tunneling	Tunnel 1	Tunnel 2
Connect Mode:	Disabled	Disabled
Accept Mode:	Waiting	Waiting

Copyright © Lantronix, Inc., 2005. All rights reserved.

3. Use the menu to navigate to sub pages where you can configure the XPort AR. Unless otherwise noted, changes are applied immediately to the XPort AR.