

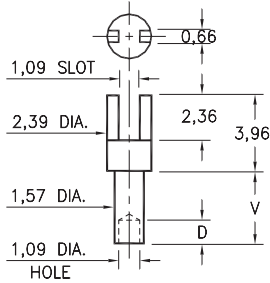
MALE PCB PINS

SOLDER TERMINALS SLOTTED

2315

2315-X-01-XX-00-00-07-0

Swage mount in 1,70 hole

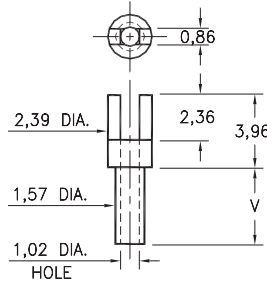


Basic Part Number	Board Thickness	Length V	Depth D
2315-1	0,79	1,14	1,02
2315-2	1,57	2,39	1,57
2315-3	2,39	3,18	1,57
2315-4	3,18	3,96	1,57

2302

2302-X-01-XX-00-00-07-0

Swage mount in 1,70 hole

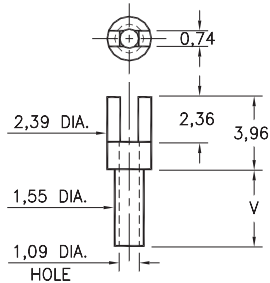


Basic Part Number	Board Thickness	Length V
2302-1	0,79	1,35
2302-2	1,57	2,13
2302-3	2,39	2,92
2302-4	3,18	3,73

2352

2352-X-01-XX-00-00-07-0

Swage mount in 1,70 hole

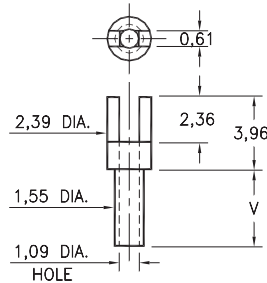


Basic Part Number	Board Thickness	Length V
2352-1	0,79	1,14
2352-2	1,57	2,39
2352-3	2,39	3,18
2352-4	3,18	3,96

2362

2362-X-01-XX-00-00-07-0

Swage mount in 1,70 hole

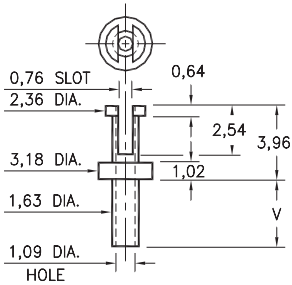


Basic Part Number	Board Thickness	Length V
2362-5	0,41	0,94
2362-1	0,79	1,35
2362-2	1,57	2,13
2362-3	2,39	2,92
2362-4	3,18	3,73

2507

2507-X-01-XX-00-00-07-0

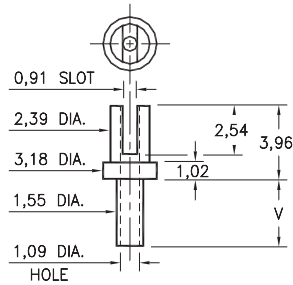
Swage mount in 1,70 hole



2526

2526-X-01-XX-00-00-07-0

Swage mount in 1,63 hole



Basic Part Number	Board Thickness	Length V
25XX-1	0,79	1,35
25XX-2	1,57	2,13
25XX-3	2,39	2,92
25XX-4	3,18	3,73

SPECIFICATIONS:

Pin Material: Brass Alloy 360, 1/2 Hard
(Swage pins are annealed)

Dimensions: Millimeters

Tolerances On: Lengths: $\pm 0,13$
Diameters: $\pm 0,051$
Angles: $\pm 2^\circ$



ORDER CODE: **XXXX - X - 01 - XX - 00 - 00 - 07 - 0**

BASIC PART #

SPECIFY PIN FINISH:

- 01 5,08 μ m TIN/LEAD OVER NICKEL
- ◆ 80 5,08 μ m TIN OVER NICKEL (RoHS)
- ◆ 44 7,62 μ m SILVER OVER COPPER (RoHS)
- 50 7,62 μ m ELECTRO-SOLDER
(60/40 SnPb)

