

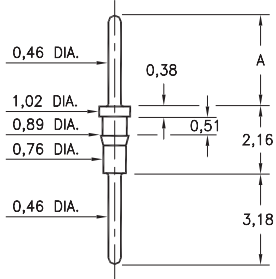
# MALE PCB PINS

## PRINTED CIRCUIT PINS

### 8685/9036

XXXX-0-00-XX-00-00-03-0

Press-fit in 0,84 mounting hole  
Pin material is Phosphor Bronze 544 (B2)

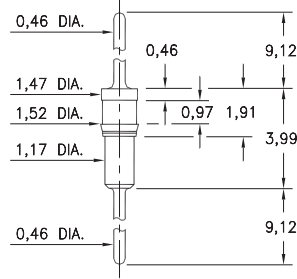


Basic Part Number	Length A
8685-0	3,18
9036-0	4,45

### 9051

9051-0-00-XX-00-00-03-0

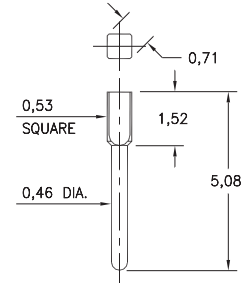
Press-fit in 1,45 mounting hole



### 8969

8969-0-05-XX-00-00-03-0

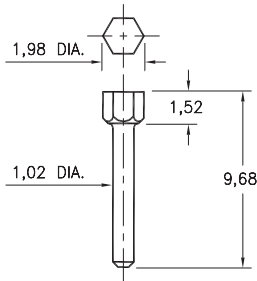
Square press-fit in 0,58 plated through-hole  
(Use .7mm drill prior to plating)



### 8979

8979-0-00-XX-00-00-03-0

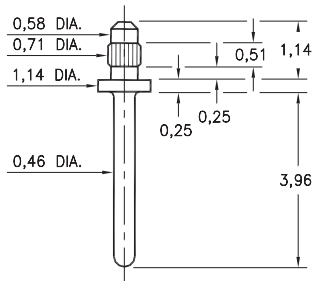
Hex press-fit in 1,88 plated through-hole



### 9159

9159-0-00-XX-00-00-03-0

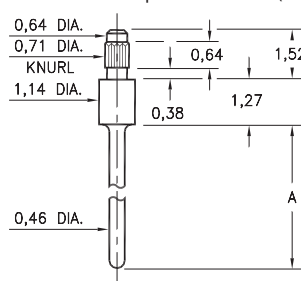
Press-fit in 0,66 mounting hole



### 3155/5155

X155-0-00-XX-00-00-03-0

Press-fit in 0,66 mounting hole  
Pin material is Phosphor Bronze 544 (B2)

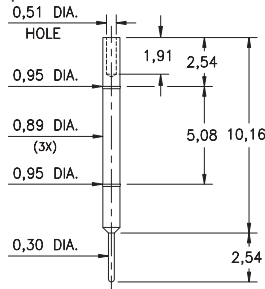


Basic Part Number	Length A
3155-0	4,57
5155-0	3,30

### 4194

4194-0-00-XX-00-00-08-0

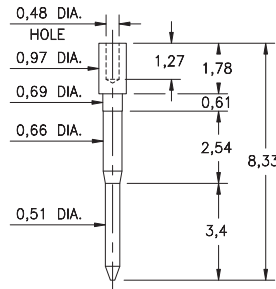
Wire crimp termination & press-fit in 0,91 hole  
Accepts wire sizes 30 AWG Max. / 36 AWG Min.



### 5556

5556-0-00-XX-00-00-38-0

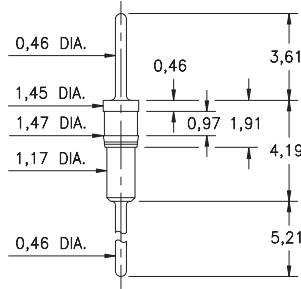
Wire crimp termination. Accepts wire sizes 30 AWG Max. / 36 AWG Min.



### 3790

3790-0-00-XX-00-00-03-0

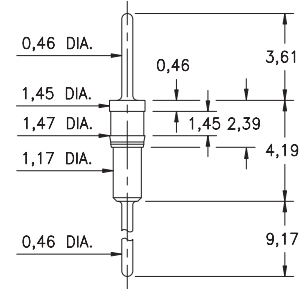
Press-fit in 1,45 mounting hole



### 3796

3796-0-00-XX-00-00-03-0

Press-fit in 1,45 mounting hole



#### SPECIFICATIONS:

**Pin Material:** Brass Alloy 360, 1/2 Hard  
(Except where noted)

**Dimensions:** Millimeters

**Tolerances On:** Lengths:  $\pm 0,13$   
Diameters:  $\pm 0,051$   
Angles:  $\pm 2^\circ$



ORDER CODE: XXXX - X - 0X - XX - 00 - 00 - XX - 0

BASIC PART #

SPECIFY PIN FINISH:

- 01 5,08 $\mu$ m TIN/LEAD OVER NICKEL
- ◆ 80 5,08 $\mu$ m TIN OVER NICKEL (RoHS)
- ◆ 15 0,25 $\mu$ m GOLD OVER NICKEL (RoHS)
- ◆ 21 0,51 $\mu$ m GOLD OVER NICKEL (RoHS)
- ◆ 34 1,27 $\mu$ m GOLD OVER NICKEL (RoHS)

