

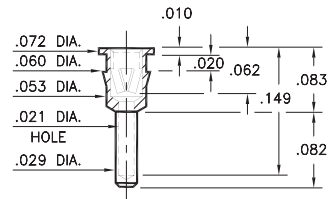
# PIN RECEPTACLES

FOR .015" - .022" DIAMETER PINS

## 0512

0512-0-15-XX-12-XX-04-0

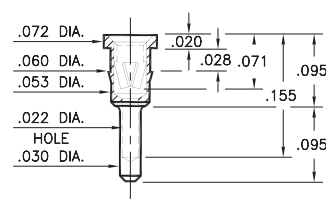
Press-fit in .057 mounting hole



## 0703

0703-0-15-XX-12-XX-04-0

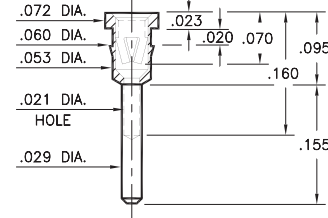
Press-fit in .057 mounting hole



## 0574

0574-0-15-XX-12-XX-04-0

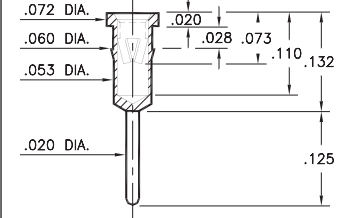
Press-fit in .057 mounting hole



## 0468 \*

0468-0-15-XX-12-XX-04-0

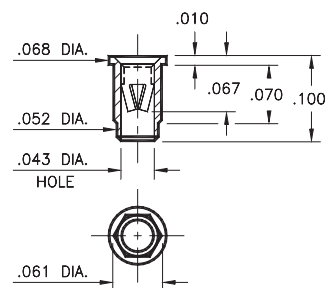
Press-fit in .057 mounting hole



## 8894 \*

8894-0-15-XX-12-XX-10-0

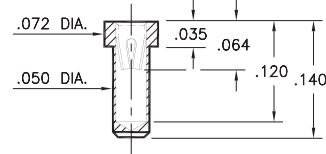
Hex press-fit in .059 plated through-hole



## 0550 \*

0550-0-15-XX-22-XX-10-0

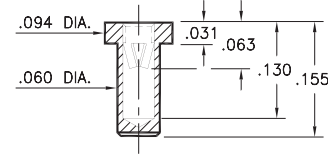
Solder mount in .052 min. mounting hole  
Also available on 16mm wide carrier tape:  
1,700 parts per 13" reel  
Order as: 0550-0-57-XX-22-XX-10-0



## 0671 \*

0671-0-15-XX-12-XX-10-0

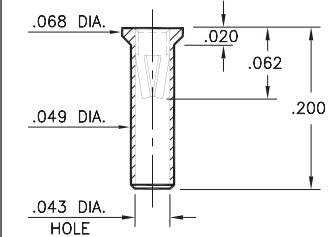
Solder mount in .063 min. mounting hole



## 0707 \*

0707-0-15-XX-12-XX-10-0

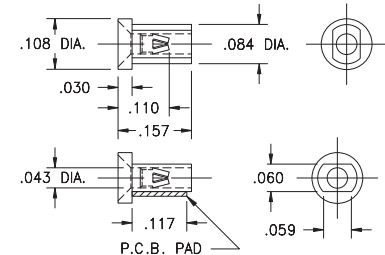
Solder mount in .051 min. mounting hole



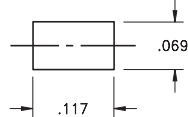
## 5739 \*

5739-0-18-XX-12-XX-10-0

Surface mount  
Also available on 16mm wide carrier tape:  
3,000 parts per 13" reel  
Order as: 5739-0-58-XX-12-XX-10-0



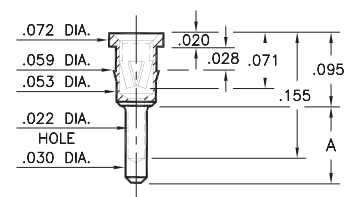
P.C.B. Layout



## 1534

1534-X-15-XX-12-XX-04-0

Press-fit in .056 mounting hole



Basic Part Number	Length A
1534-0	.095
1534-1	.125

### SPECIFICATIONS:

Shell Material: Brass Alloy 360, 1/2 Hard

Contact Material: Beryllium Copper Alloy 172, HT

Dimensions: Inches

Tolerances On: Lengths: ±.005

Diameters: ±.002

Angles: ± 2°



ORDER CODE: XXXX - X - XX - XX - XX - XX - XX - 0

BASIC PART #

SPECIFY SHELL FINISH:

01 200 μ" TIN/LEAD OVER NICKEL

◆ 80 200 μ" TIN OVER NICKEL (RoHS)

◆ 15 10 μ" GOLD OVER NICKEL (RoHS)

SPECIFY CONTACT FINISH:

02 100 μ" TIN/LEAD OVER NICKEL

◆ 84 100 μ" TIN OVER NICKEL (RoHS)

◆ 27 30 μ" GOLD OVER NICKEL (RoHS)

SELECT CONTACT:

#12 or #22 CONTACT (DATA ON PAGE 252)

\* (Contact may be interchanged with group B or C contact on page 248)

