

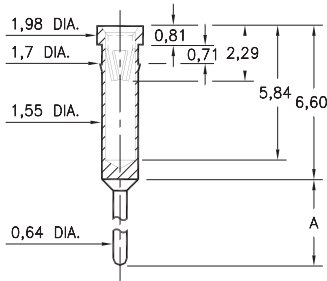
# PIN RECEPTACLES

FOR 0,64 - 0,94 DIAMETER PINS AND 0,64 SQUARE PINS

## 0401/6401

X401-0-15-XX-47-XX-04-0

Press-fit in 1,63 mounting hole

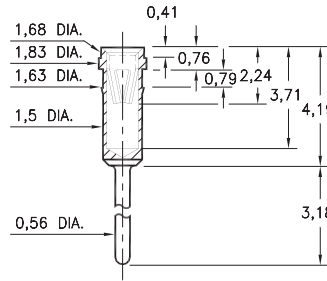


Basic Part Number	Length A
0401-0	8,64
6401-0	13,72

## 1303

1303-0-15-XX-47-XX-04-0

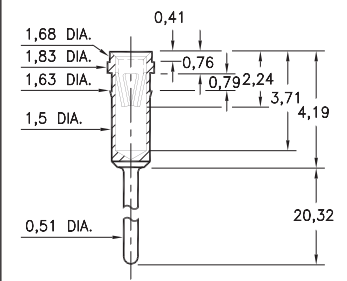
Press-fit in 1,55 mounting hole



## 8303

8303-0-15-XX-47-XX-04-0

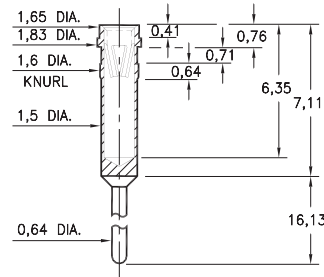
Press-fit in 1,55 mounting hole



## 4095

4095-0-15-XX-47-XX-04-0

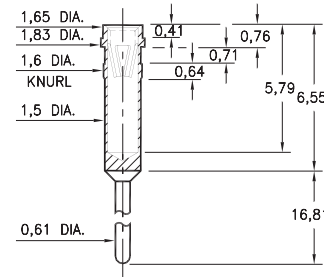
Press-fit in 1,55 mounting hole



## 4014

4014-0-15-XX-47-XX-04-0

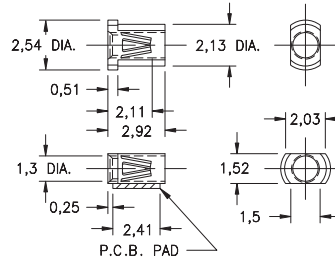
Press-fit in 1,55 mounting hole



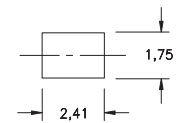
## 8806

8806-0-18-XX-47-XX-40-0

Surface mount  
Also available on 12mm wide carrier tape:  
4,000 parts per 330mm reel  
Order as: 8806-0-58-XX-47-XX-10-0



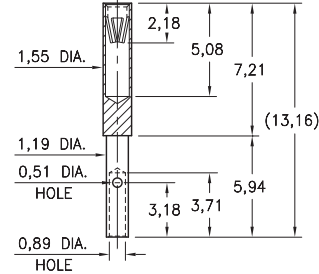
P.C.B. Layout



## 0722

0722-0-33-XX-47-XX-10-0

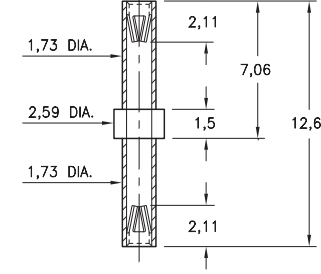
Wire crimp termination. Accepts wire sizes 22 AWG Max. / 28 AWG Min.



## 6839

6839-0-40-XX-47-XX-10-0

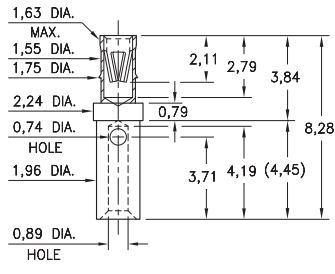
Double Ended Receptacle



## 6368

6368-0-33-XX-47-XX-10-0

Wire crimp termination. Accepts wire sizes 22 AWG Max. / 26 AWG Min.



### SPECIFICATIONS:

**Shell Material:** Brass Alloy 360, 1/2 Hard

**Contact Material:** Beryllium Copper Alloy 172, HT

**Dimensions:** Millimeters

**Tolerances On:** Lengths: ± 0,13

Diameters: ± 0,051

Angles: ± 2°



**ORDER CODE:** XXXX - X - XX - XX - 47 - XX - XX - 0

**BASIC PART #**

**SPECIFY SHELL FINISH:**

- 01 5,08µm TIN/LEAD OVER NICKEL
- ◆ 80 5,08µm TIN OVER NICKEL (RoHS)
- ◆ 15 0,25µm GOLD OVER NICKEL (RoHS)

**SPECIFY CONTACT FINISH:**

- 01 5,08µm TIN/LEAD OVER NICKEL
- ◆ 80 5,08µm TIN OVER NICKEL (RoHS)
- ◆ 27 0,76µm GOLD OVER NICKEL (RoHS)

**SELECT CONTACT:**

#47 CONTACT (DATA ON PAGE 256)

(For alternate contact choices, see group D on page 248)

