

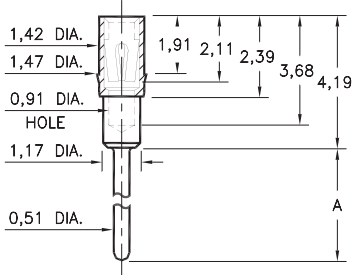
# PIN RECEPTACLES

FOR 0,38 - 0,64 DIAMETER PINS

## 1802/3802/4030/8866

XXXX-0-15-XX-43-XX-04-0

Press-fit in 1,45 mounting hole

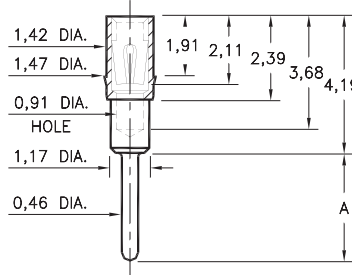


Basic Part Number	Length A
1802-0	3,18
3802-0	4,19
8866-0	19,69
4030-0	20,70

## 1803/1805/1808/3805

XXXX-0-15-XX-XX-XX-04-0

Press-fit in 1,45 mounting hole

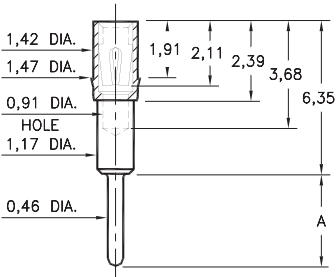


Basic Part Number	Length A
1808-0	2,54
1803-0	3,68
1805-0	5,41
3805-0	9,98

## 1804/1806

180X-0-15-XX-43-XX-04-0

Press-fit in 1,45 mounting hole

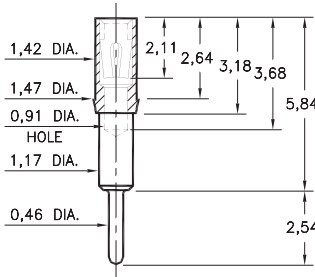


Basic Part Number	Length A
1804-0	2,03
1806-0	2,92

## 1807

1807-0-15-XX-43-XX-04-0

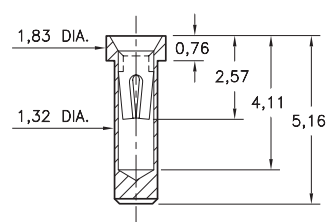
Press-fit in 1,45 mounting hole



## 4728

4728-15-XX-30-XX-10-0

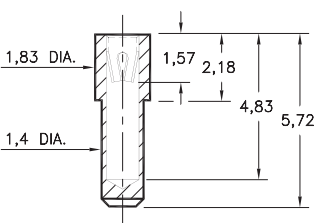
Solder mount in 1,37 min. mounting hole



## 8830

8830-15-XX-22-XX-10-0

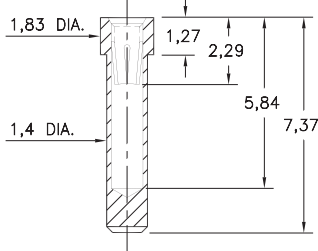
Solder mount in 1,45 min. mounting hole



## 8363

8363-0-15-XX-35-XX-10-0

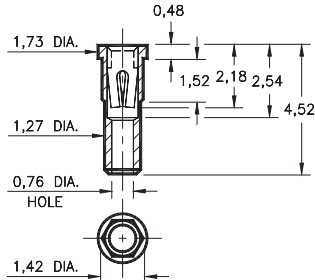
Solder mount in 1,45 min. mounting hole



## 4622

4622-0-15-XX-30-XX-10-0

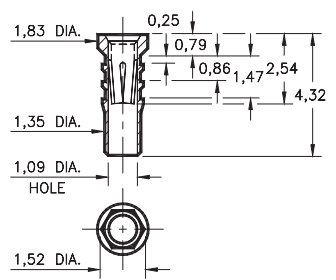
Hex press-fit in 1,35 plated through-hole



## 6252

6252-0-15-XX-32-XX-10-0

Hex press-fit in 1,45 plated through-hole



### SPECIFICATIONS:

Shell Material: Brass Alloy 360, 1/2 Hard

Contact Material: Beryllium Copper Alloy 172, HT

Dimensions: Millimeters

Tolerances On: Lengths: ± 0,13  
Diameters: ± 0,051  
Angles: ± 2°



ORDER CODE: **XXXX - X - 15 - XX - XX - XX - XX - 0**

BASIC PART #

SPECIFY SHELL FINISH:

- 01 5,08µm TIN/LEAD OVER NICKEL
- ◆ 80 5,08µm TIN OVER NICKEL (RoHS)
- ◆ 15 0,25µm GOLD OVER NICKEL (RoHS)

SPECIFY CONTACT FINISH:

- 02 2,54µm TIN/LEAD OVER NICKEL
- ◆ 84 2,54µm TIN OVER NICKEL (RoHS)
- ◆ 27 0,76µm GOLD OVER NICKEL (RoHS)

SELECT CONTACT:

#22, #30, #32 or #43 CONTACT (DATA ON PAGES 252, 253 & 254)  
(For alternate contact choices, see groups B and C on page 248)

