

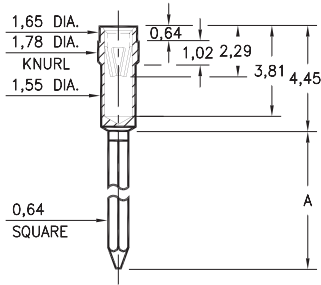
WRAPOST RECEPTACLES

FOR 0,56 - 0,81 DIAMETER PINS (#06 CONTACT)
FOR 0,56 - 0,86 DIAMETER PINS (#16 CONTACT)

2297

2297-X-17-XX-16-XX-02-0

Press-fit in 1,70 mounting hole

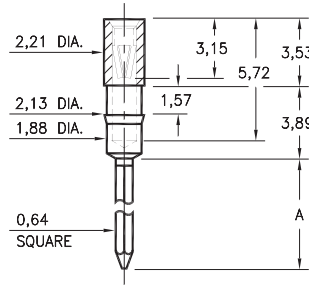


Basic Part Number	# of Wraps	Length A
2297-2	2	9,4
2297-3	3	10,92

0280

0280-X-17-XX-06-XX-02-0

Press-fit in 2,06 mounting hole

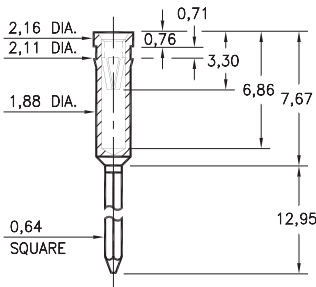


Basic Part Number	# of Wraps	Length A
0280-2	2	9,14
0280-3	3	12,95

0281

0281-3-17-XX-06-XX-02-0

Press-fit in 2,03 mounting hole



SPECIFICATIONS:

Shell Material: Brass Alloy 360, 1/2 Hard

Contact Material: Beryllium Copper Alloy 172, HT

Dimensions: Millimeters

Tolerances On: Lengths: ± 0,13

Diameters: ± 0,051

Angles: ± 2°



ORDER CODE: XXXX - X - 17 - XX - XX - XX - 02 - 0

BASIC PART #

SPECIFY SHELL FINISH:

- 01 5,08µm TIN/LEAD OVER NICKEL
- ◆ 80 5,08µm TIN OVER NICKEL (RoHS)
- ◆ 15 0,25µm GOLD OVER NICKEL (RoHS)

SPECIFY CONTACT FINISH:

- 01 5,08µm TIN/LEAD OVER NICKEL
- ◆ 80 5,08µm TIN OVER NICKEL (RoHS)
- ◆ 27 0,76µm GOLD OVER NICKEL (RoHS)

SELECT CONTACT:

#06 or #16 CONTACT (DATA ON PAGES 255 & 256)
 (For alternate contact choices, see group D on page 248)

