

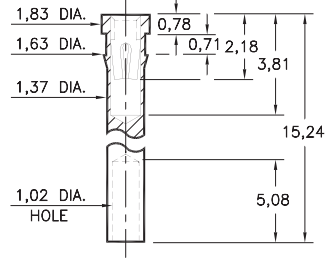
# PIN RECEPTACLES

FOR 0,38 - 0,64 DIAMETER PINS

## 1707

1707-0-19-XX-30-XX-10-0

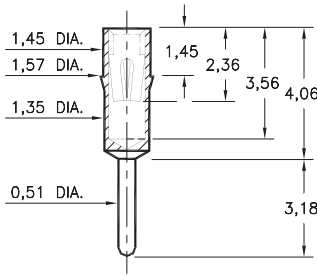
Press-fit in 1,55 mounting hole  
Wire Crimp Termination. Accepts wire sizes 22 AWG Max. / 24 AWG Min.



## 0240

0240-0-15-XX-30-XX-04-0

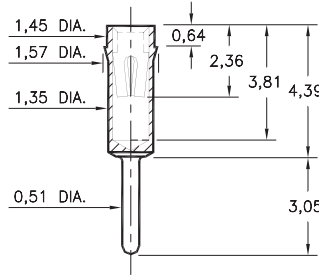
Press-fit in 1,49 mounting hole



## 0307

0307-0-15-XX-30-XX-04-0

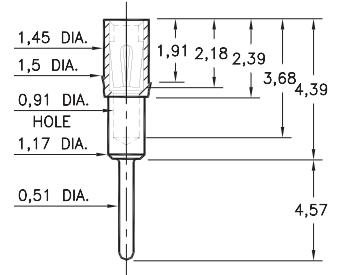
Press-fit in 1,5 mounting hole



## 1753

1753-0-15-XX-30-XX-04-0

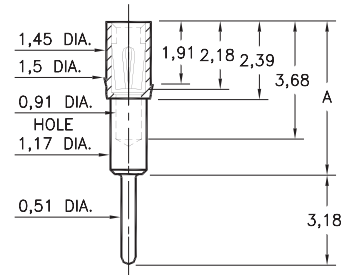
Press-fit in 1,45 mounting hole



## 1705/1706/1762

17XX-0-15-XX-3X-XX-04-0

Press-fit in 1,45 mounting hole

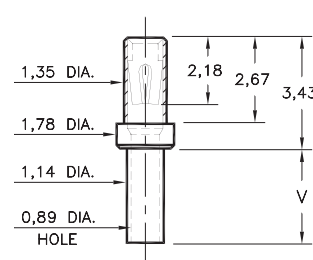


| Basic Part Number | Height A |
|-------------------|----------|
| 1705-0            | 4,19     |
| 1706-0            | 5,54     |
| 1762-0            | 7,62     |

## 0672

0672-X-15-XX-30-XX-10-0

Swage mount in 1,24 hole

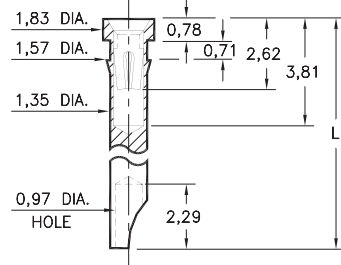


| Basic Part Number | Board Thickness | Length V |
|-------------------|-----------------|----------|
| 0672-1            | 0,79            | 1,32     |
| 0672-2            | 1,57            | 2,13     |
| 0672-3            | 2,39            | 2,92     |
| 0672-4            | 3,18            | 3,71     |

## 1024/1104

1XX4-0-18-XX-30-XX-10-0

Press-fit in 1,5 mounting hole  
Accepts wire sizes up to 0,71 dia.

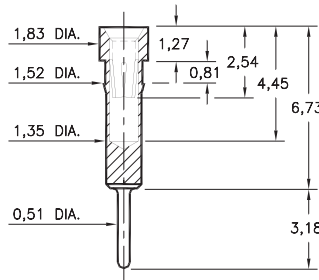


| Basic Part Number | Length L |
|-------------------|----------|
| 1024-0            | 7,37     |
| 1104-0            | 11,43    |

## 0498

0498-0-15-XX-35-XX-04-0

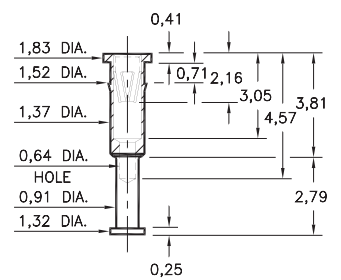
Press-fit in 1,45 mounting hole



## 8131

8131-0-15-XX-30-XX-10-0

Press-fit in 1,45 mounting hole



### SPECIFICATIONS:

**Shell Material:** Brass Alloy 360, 1/2 Hard

**Contact Material:** Beryllium Copper Alloy 172, HT

**Dimensions:** Millimeters

**Tolerances On:** Lengths: ± 0,13

Diameters: ± 0,051

Angles: ± 2°



**ORDER CODE:** XXXX - X - 1X - XX - XX - XX - XX - 0

**BASIC PART #**

**SPECIFY SHELL FINISH:**

- 01 5,08µm TIN/LEAD OVER NICKEL
- ◆ 80 5,08µm TIN OVER NICKEL (RoHS)
- ◆ 15 0,25µm GOLD OVER NICKEL (RoHS)

**SPECIFY CONTACT FINISH:**

- 02 2,54µm TIN/LEAD OVER NICKEL
- ◆ 84 2,54µm TIN OVER NICKEL (RoHS)
- ◆ 27 0,76µm GOLD OVER NICKEL (RoHS)

**SELECT CONTACT:**

**#30 or #35 CONTACT (DATA ON PAGE 253 & 254)**

(For alternate contact choices, see groups B and C on page 248)

