

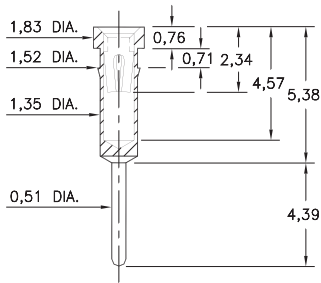
# PIN RECEPTACLES

FOR 0,38 - 0,64 DIAMETER PINS

## 8964

8964-0-15-XX-30-XX-04-0

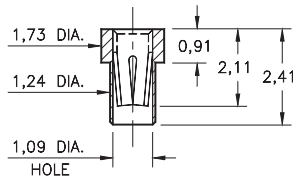
Press-fit in 1,45 mounting hole



## 5342

5342-0-15-XX-35-XX-10-0

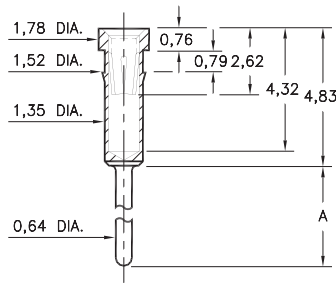
Solder mount in 1,3 min. mounting hole  
Also available on 8mm wide carrier tape:  
6,000 parts per 330mm reel  
Order as: 5342-0-57-XX-35-XX-10-0



## 8857

8857-X-15-XX-32-XX-04-0

Press-fit in 1,45 mounting hole

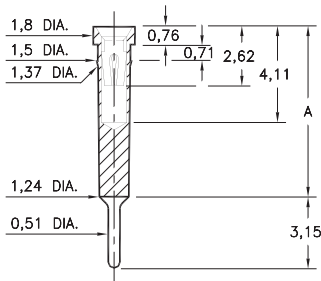


Basic Part Number	Length A
8857-0	7,9
8857-1	11,38
8857-2	14,96
8857-3	18,57
8857-4	22,12

## 8862/8877

88XX-0-15-XX-30-XX-04-0

Press-fit in 1,42 mounting hole

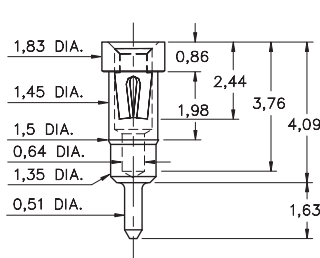


Basic Part Number	Length A
8862-0	7,62
8877-0	8,89

## 1334

1334-0-15-XX-30-XX-04-0

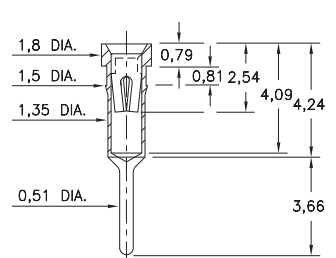
Press-fit in 1,45 mounting hole



## 8855

8855-0-15-XX-30-XX-34-0

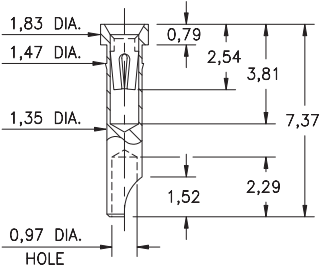
Press-fit in 1,45 mounting hole



## 2954

2954-0-18-XX-30-XX-10-0

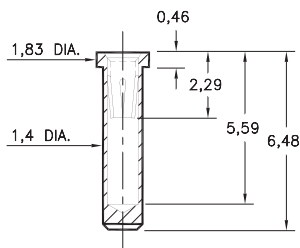
Press-fit in 1,45 mounting hole  
Accepts wire sizes up to 0,71 dia.



## 9363

9363-0-15-XX-35-XX-10-0

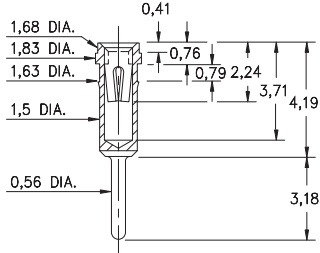
Solder mount in 1,45 min. mounting hole



## 1023

1023-0-15-XX-30-XX-04-0

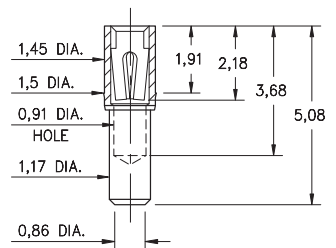
Press-fit in 1,55 mounting hole



## 1701

1701-0-15-XX-30-XX-10-0

Press-fit in 1,45 mounting hole



### SPECIFICATIONS:

**Shell Material:** Brass Alloy 360, 1/2 Hard

**Contact Material:** Beryllium Copper Alloy 172, HT

**Dimensions:** Millimeters

**Tolerances On:** Lengths: ± 0,13  
Diameters: ± 0,051  
Angles: ± 2°

RoHS-2  
2011/65/EU

**ORDER CODE:** XXXX - X - XX - XX - XX - XX - 10 - 0

**BASIC PART #**

**SPECIFY SHELL FINISH:**

- 01 5,08µm TIN/LEAD OVER NICKEL
- ◆ 80 5,08µm TIN OVER NICKEL (RoHS)
- ◆ 15 0,25µm GOLD OVER NICKEL (RoHS)

**SPECIFY CONTACT FINISH:**

- 02 2,54µm TIN/LEAD OVER NICKEL
- ◆ 84 2,54µm TIN OVER NICKEL (RoHS)
- ◆ 27 0,76µm GOLD OVER NICKEL (RoHS)

**SELECT CONTACT:**

#30, #32 or #35 CONTACT (DATA ON PAGE 253 & 254)  
(For alternate contact choices, see groups B and C on page 248)

