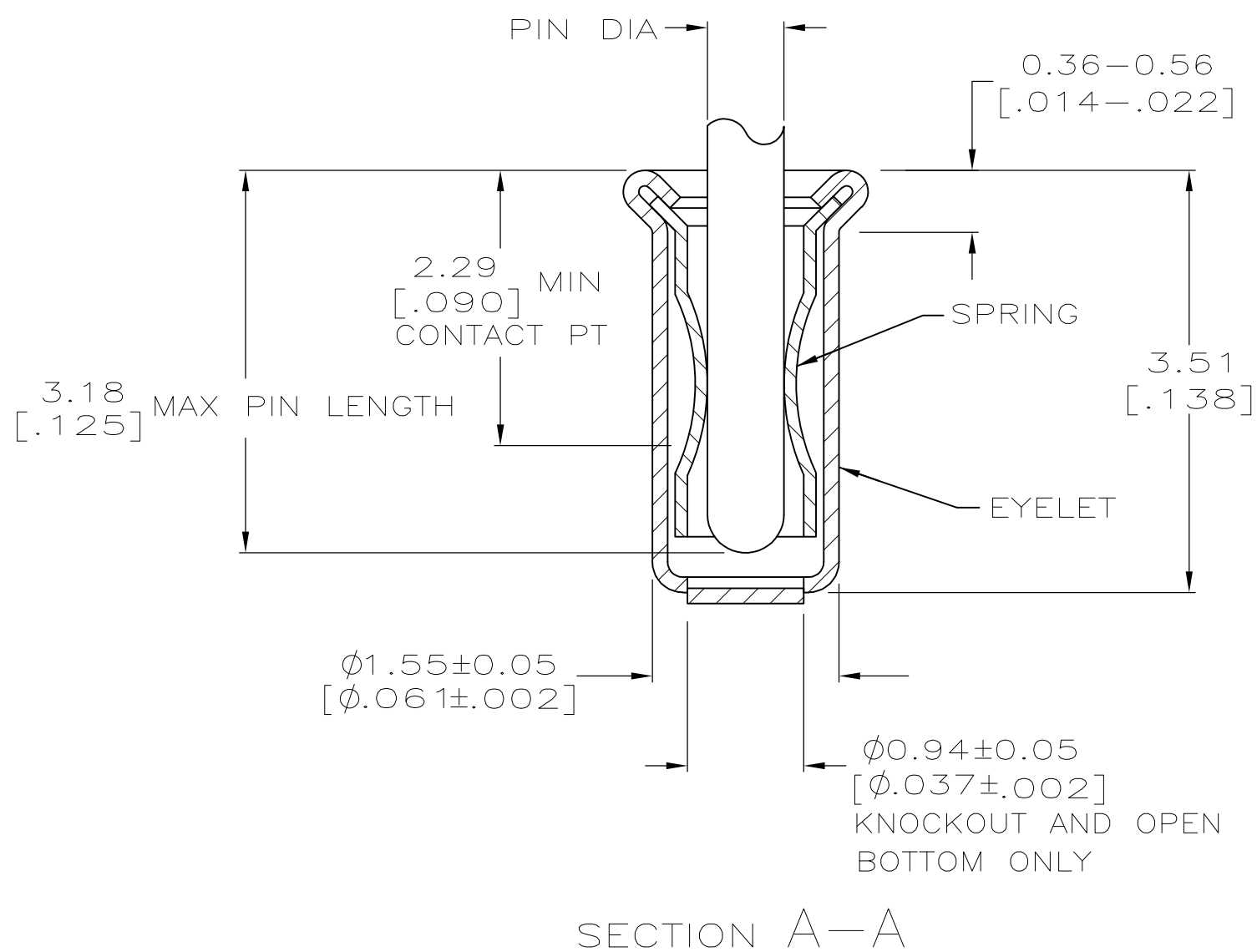
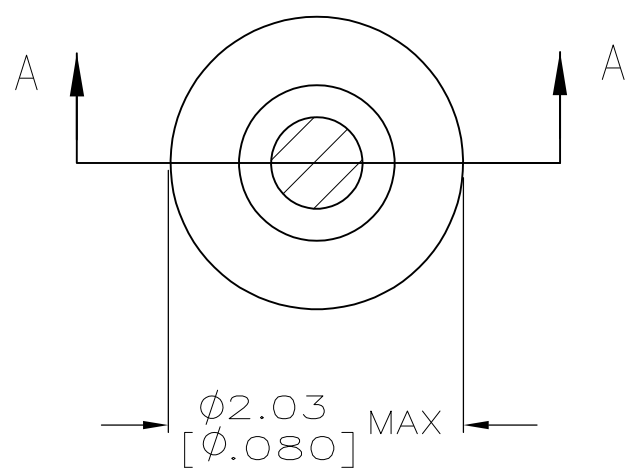


THIS DRAWING IS UNPUBLISHED. RELEASED FOR PUBLICATION
 © COPYRIGHT - By - ALL RIGHTS RESERVED.

| LOC | | DIST | | REVISIONS | | | |
|-----|-----|-------------|--|---------------------------|---------|--------|--|
| P | LTR | DESCRIPTION | | DATE | DWN | APVD | |
| GP | 00 | P | | REVISED PER ECO-11-004835 | 07MAR11 | RK HMR | |



- 1. TIN PLATE PER ASTM B 545 0.00254 [.000100] MIN THICK.
- 2. GOLD PLATE PER ASTM B 488 0.00076 [.000030] MIN THICK OVER NICKEL PLATE PER QQ-N-290 0.00028 [.000011] MIN THICK ON CONTACT AREA.
- 3. RECOMMENDED HOLE SIZE, PLATED OR UNPLATED:
 MACHINE INSERTION: 1.57 ^{+0.10}/_{-0.08} [.062 ^{+0.004}/_{-0.003}]
 HAND INSERTION: 1.60 ^{+0.10}/_{-0.00} [.063 ^{+0.004}/_{-0.000}]
- 4. APPLICATION TOOL PART NUMBER: MACHINE NO. 682127-4
 INSERTION HEAD NO. 682039-3
- 5. TO INSURE PROPER SPRING TENSION DO NOT EXCEED A 0.05 [.002] DIFFERENCE IN PIN DIA WHEN CHANGING TO A SMALLER PIN.
- 6. BOTTOM PLUG KNOCKOUT TOOL PART NUMBER 69729 WITH TIP PART NUMBER 69728-1.
- 7. MATERIAL: BERYLLIUM COPPER PER ASTM B 194
 EYELET: COPPER PER ASTM B 152
- 8. OBSOLETE PARTS: OBSOLETE CIS STREAMLINING PER D.RENAUD/D.SINISI

| 8 | OBSOLETE | FINISH | | PART NO | | |
|---|-------------|---------------------|-------------|---------|--------|-------------|
| | | EYELET | SPRING | | | |
| | OPEN | 0.76-0.84 | [.030-.033] | TIN 1 | GOLD 2 | 7-5331677-4 |
| | CLOSED | 0.66-0.74 | [.026-.029] | | | 3-5331677-8 |
| | KNOCKOUT | 0.76-0.84 | [.030-.033] | TIN 1 | GOLD 2 | 3-5331677-4 |
| | | 0.66-0.74 | [.026-.029] | | | 3-5331677-2 |
| | OPEN | 0.76-0.84 | [.030-.033] | TIN 1 | GOLD 2 | 2-5331677-4 |
| | CLOSED | 0.76-0.84 | [.030-.033] | | | 2-5331677-2 |
| | CLOSED | 0.56-0.64 | [.022-.025] | TIN 1 | GOLD 2 | 1-5331677-8 |
| | | 0.76-0.84 | [.030-.033] | | | 1-5331677-6 |
| | BOTTOM TYPE | RECOMMENDED PIN DIA | 5 | | | |

| | | | | |
|--|--|--|----------------------------------|--------------------|
| THIS DRAWING IS A CONTROLLED DOCUMENT. | | DWN A. FERNANDEZ-DOCK5 22APR2005 | TE Connectivity | |
| DIMENSIONS: mm [INCHES] | TOLERANCES UNLESS OTHERWISE SPECIFIED: | CHK J. HAVENER 22APR2005 | NAME | |
| 0 PLC ± - | 1 PLC ± - | APVD J. HAVENER 22APR2005 | MINIATURE SPRING SOCKET ASSEMBLY | |
| 2 PLC ± - | 3 PLC ± 0.20 [.008] | PRODUCT SPEC | 108-14008 | |
| 4 PLC ± - | ANGLES ± - | APPLICATION SPEC | 114-13152 | |
| MATERIAL NOTE 7 | FINISH SEE TABLE | WEIGHT - | SIZE A2 | CAGE CODE 00779 |
| | | CUSTOMER DRAWING | SCALE 20:1 | SHEET 1 OF 1 |