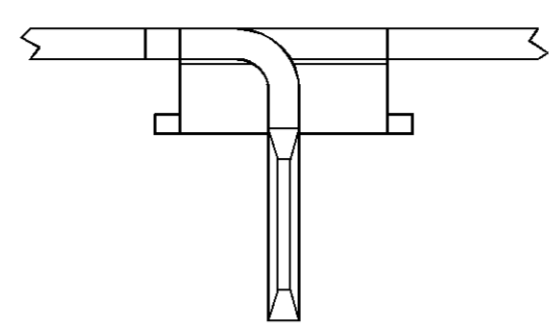
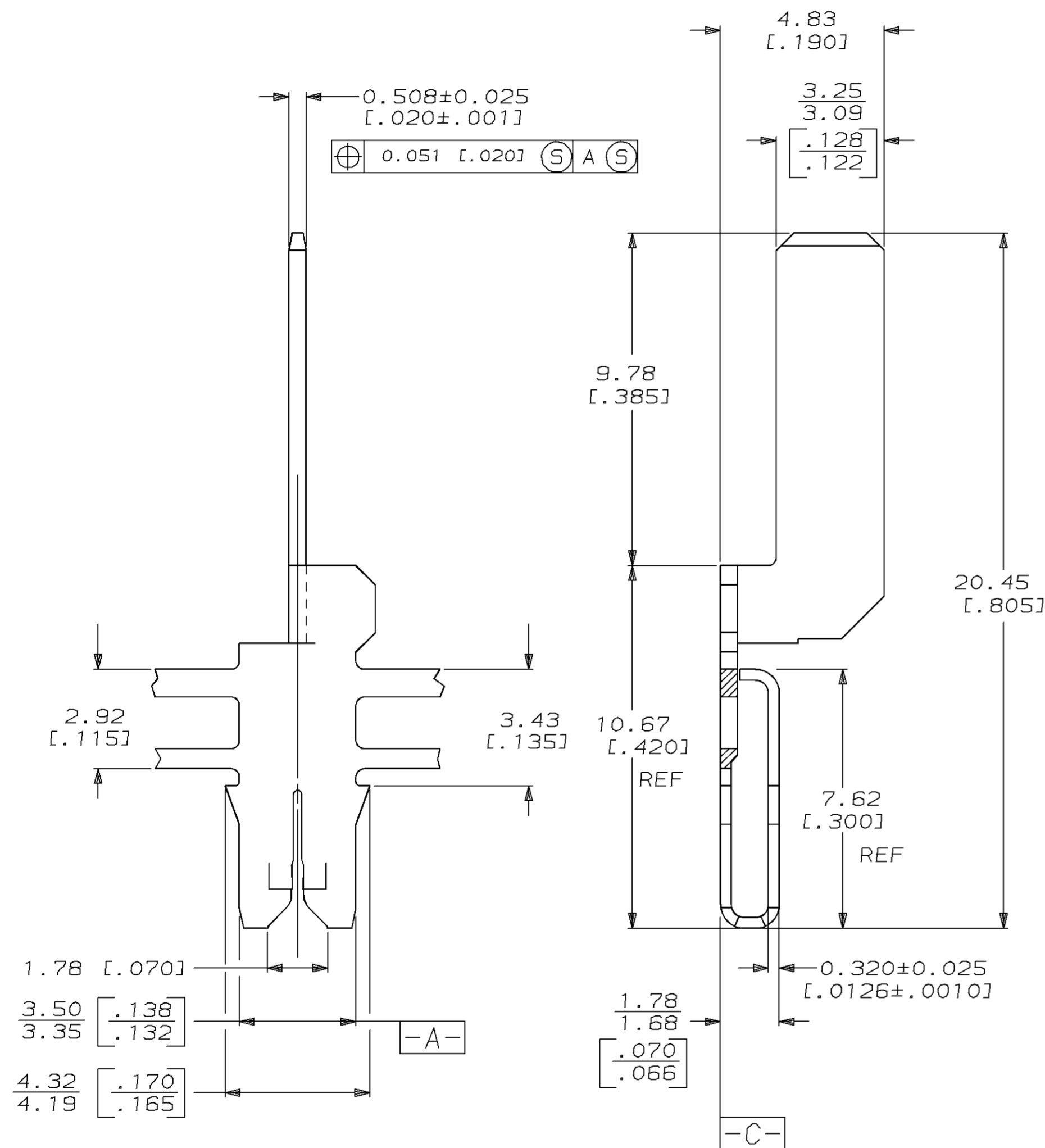
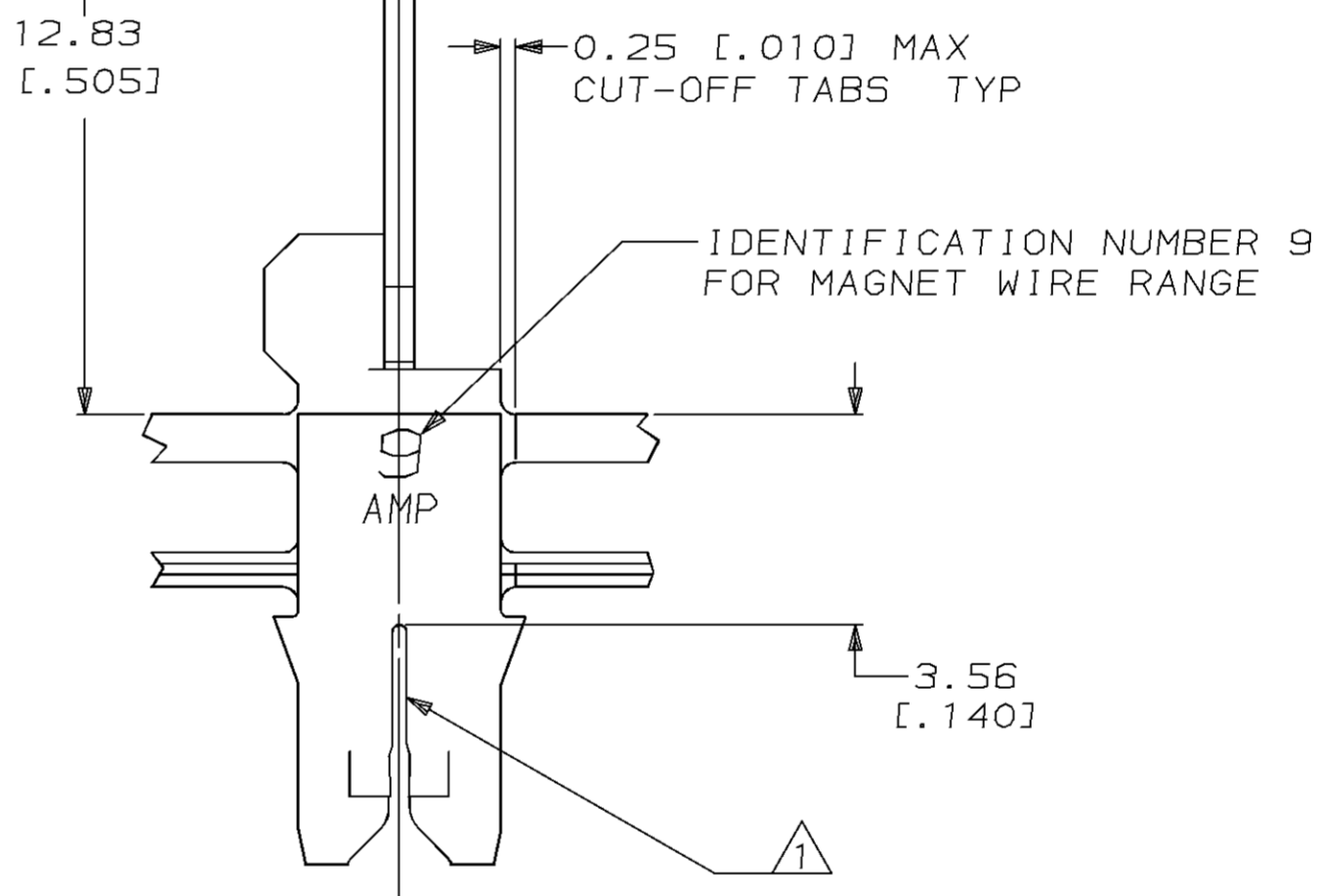


LOC		DIST		P		F		ZONE		LTR		REVISIONS		DATE	APPD
AF	50												REV PER 0710-0522-95	11/DEC/95	RG/NN



- 1 SLOT TERMINATES 0.36-0.50mm [#27-#24] AWG COPPER MAGNET WIRE EITHER SINGLE OR DOUBLE OF THE SAME SIZE.
- 2 CONTINUOUS STRIP ON REELS WITH TERMINALS LOCATED ON 8.38±0.08 [.330±.003] CENTERS.



DO NOT SCALE PRINT. UNLESS SPECIFIED DIMENSIONS IN mm [INCHES] TOLERANCES ON : 2 PLC DEC ± 0.25 [.010] 3 PLC DEC ± - ANGLES ± -		DR 19/SEP/94 MICHAEL S. FEHER		AMP Incorporated Harrisburg, PA 17105-3608	
MATERIAL #4M PRE-MILLED BRASS		CHK 21/SEP/94 JEFF R. RUTH			
FINISH 0.002032 [.000080] MIN TIN PER MIL-T-10727		APPD 21/SEP/94 NELSON E. NEFF		NAME TERMINAL, TAB, 3.18 [.125], MAG-MATE™	
THIS DRAWING IS A CONTROLLED DOCUMENT FOR AMP INCORPORATED. IT IS SUBJECT TO CHANGE AND THE CONTROLLING ENGINEERING ORGANIZATION SHOULD BE CONTACTED FOR THE LATEST REVISION.		APPD 21/SEP/94 TERRY L. SHUTTER		DRAWING NO G=63808	
		PRODUCT SPEC 108-2012		CAGE CODE 00779	
		APPLICATION SPEC 114-2046		SCALE 8:1	
		WEIGHT -		SHEET 1 OF 1	