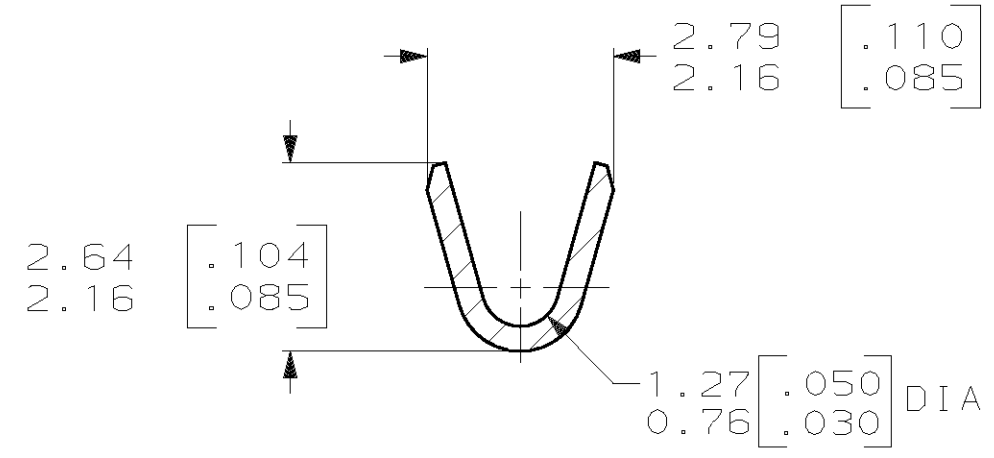
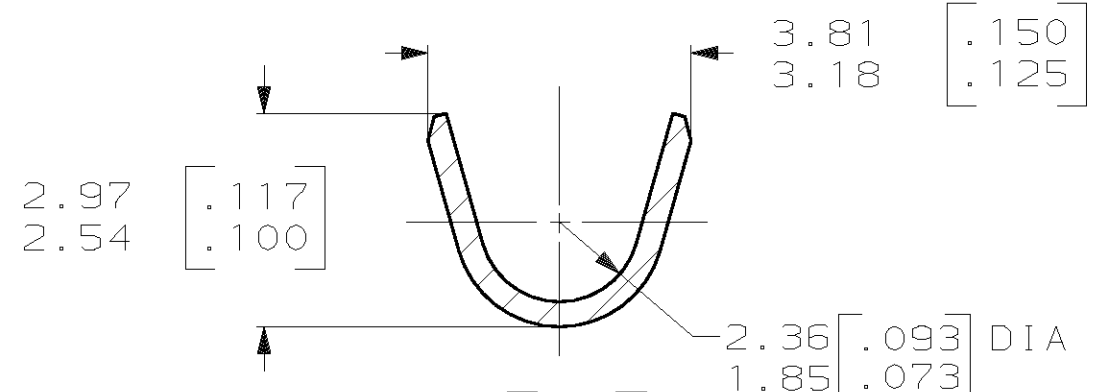


LOC	DIST	P	F	ZONE	LTR	DESCRIPTION	DATE	APPD
AF	50				C	REVISED STATUS -2 PER OG3A-0101-02	04MAR02	MF-KR

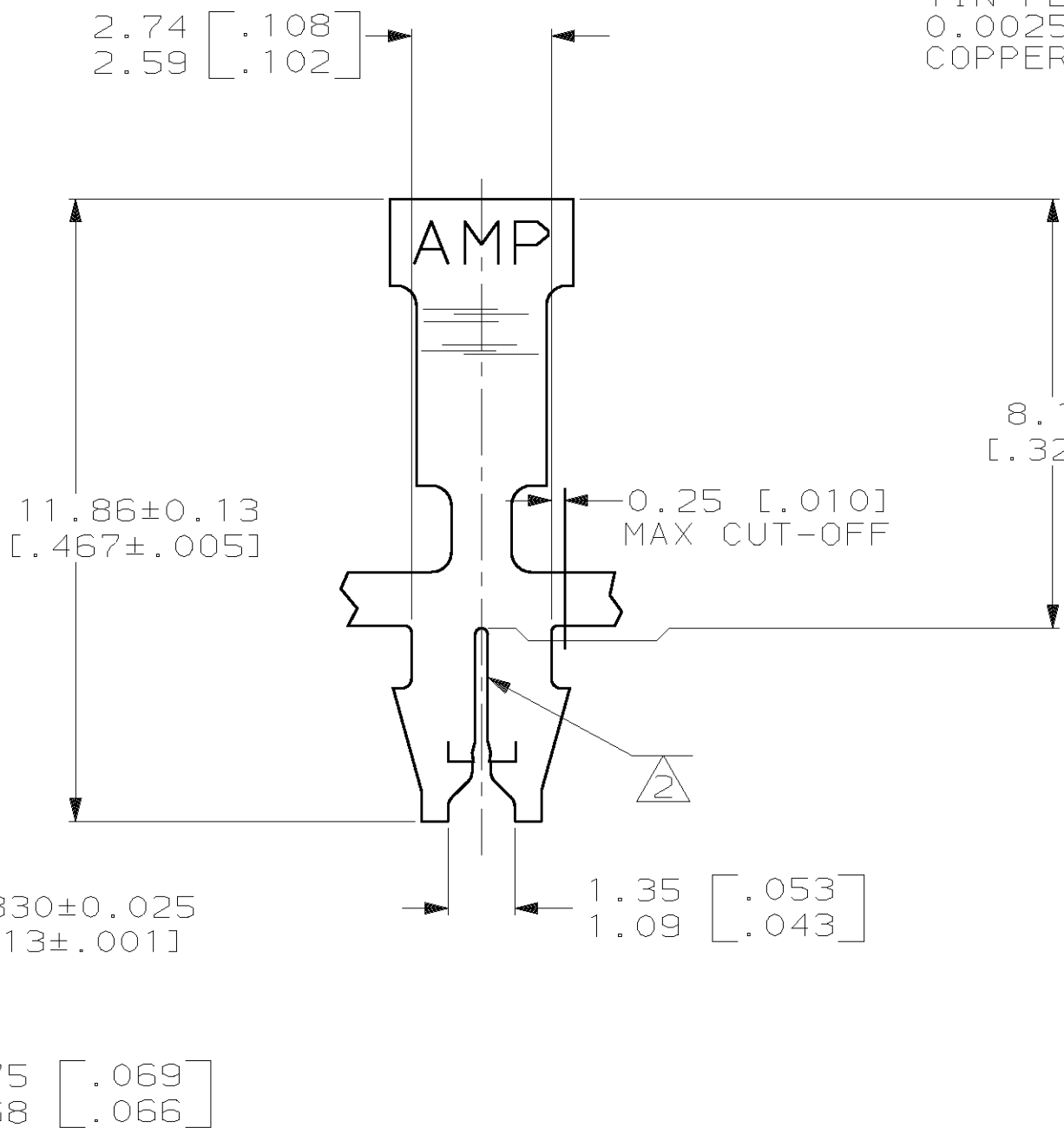
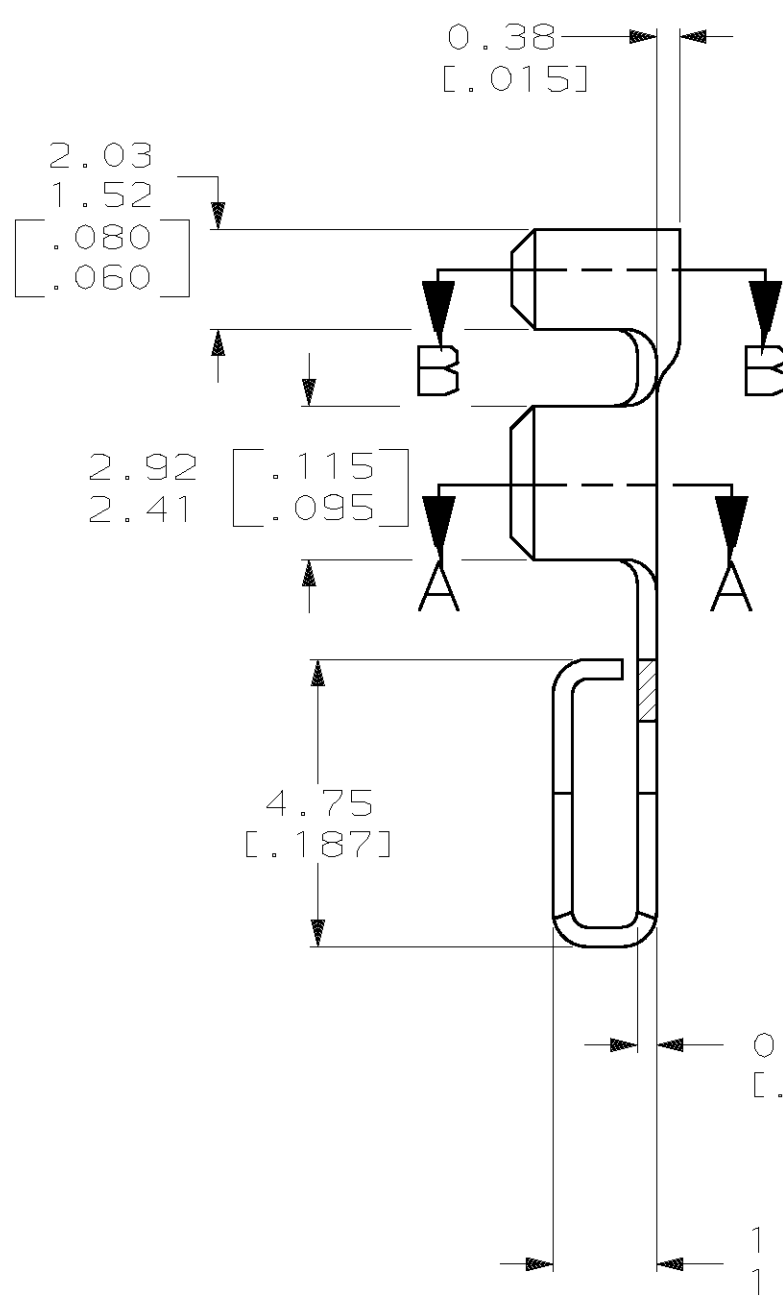
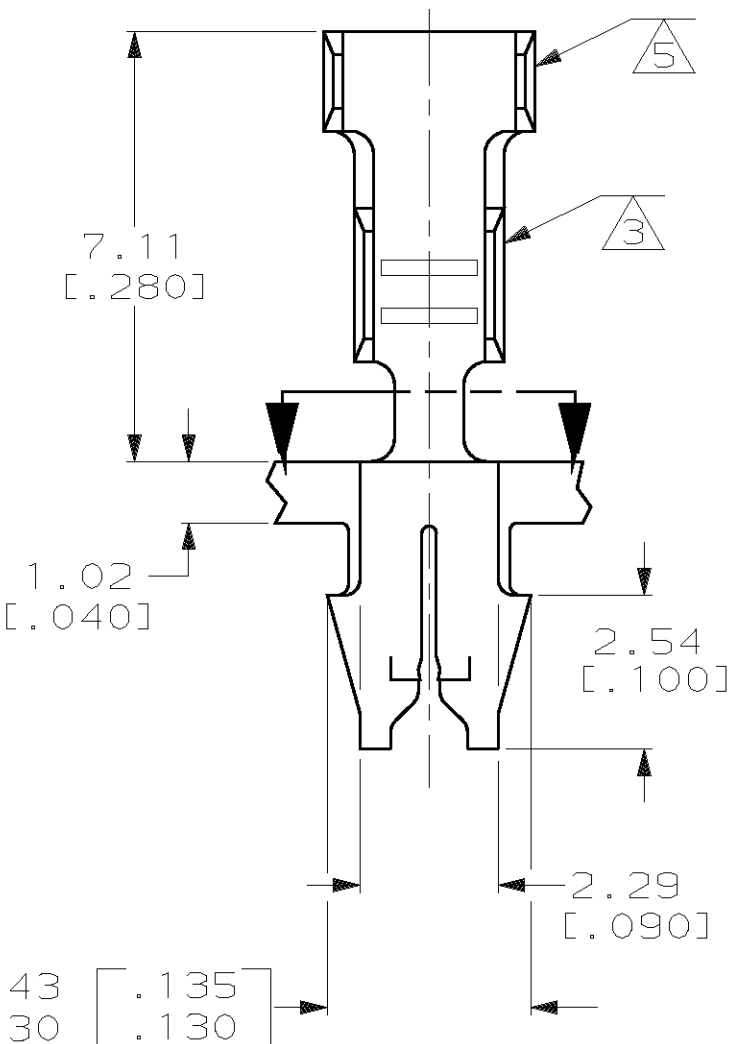
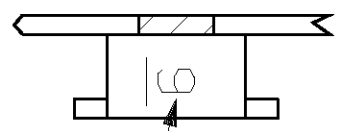


SECTION A-A
 ROTATED 90° CW
 SCALE 10:1



SECTION B-B
 ROTATED 90° CW
 SCALE 10:1

- 1 CONTINUOUS STRIP ON REELS (NO SPLICES) WITH TERMINALS LOCATED ON 8.38±0.08 [.330±.003] CENTERS.
- 2 SLOT ACCEPTS 0.36-0.45mm [#27-#25] AWG COPPER MAGNET WIRE 2 WIRES MAX OF THE SAME SIZE PER SLOT.
- 3 WIRE BARREL ACCEPTS 0.3-1.0mm² [#22-#18] AWG LEAD WIRE.
- 4 IDENTIFICATION NUMBER 9 FOR WIRE SLOT SIZE.
- 5 INSULATION BARREL ACCEPTS 1.80-2.23 [.071-.088] DIA INSULATION.
- 6 0.00203 [.000080]-0.00381 [.000150] TIN PLATE PER MIL-T-10727 OVER 0.00254 [.000100]-0.00508 [.000200] COPPER UNDERPLATE PER MIL-C-14550.



REVERSE	63856-2
STANDARD	63856-1
REELING	PART NUMBER

TYPE	WIDTH	STRIP LENGTH ±.015	TYPE	WIDTH	±.051 [.002] HEIGHT	WIRE
INSUL BARREL CRIMP	2.79 [.110]	3.56 [.140]	F	1.78 [.070]	1.08 [.043]	0.4mm [22]
					1.18 [.047]	0.5mm [20]
					1.32 [.052]	0.8mm [18]

THIS DRAWING IS A CONTROLLED DOCUMENT FOR AMP INCORPORATED. IT IS SUBJECT TO CHANGE AND THE CONTROLLING ENGINEERING ORGANIZATION SHOULD BE CONTACTED FOR THE LATEST REVISION.

DO NOT SCALE PRINT. UNLESS SPECIFIED DIMENSIONS IN mm [INCHES] TOLERANCES ON : 2 PLC DEC ± 0.13 [.005] 3 PLC DEC ± - ANGLES ± -	DR 07/JUN/95 MICHAEL S. FEHER	AMP Incorporated Harrisburg, PA 17105-3608
	CHK 08/JUN/95 JEFF R. RUTH	
APPD 08/JUN/95 KURT A. RANDOLPH	NAME	
APPD 08/JUN/95 TERRY L. SHUTTER	TERMINAL, F-CRIMP, MAG-MATE™	
MATERIAL H04 BRASS	PRODUCT SPEC 108-2012	SIZE
FINISH	APPLICATION SPEC 114-2069	CAGE CODE
		DRAWING NO
		C=63856
		SCALE
		8:1
		SHEET
		1 OF 1