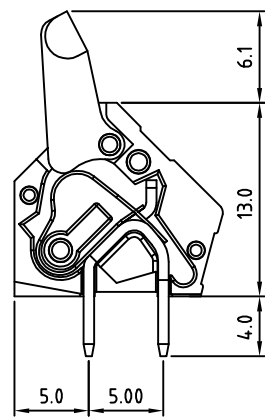
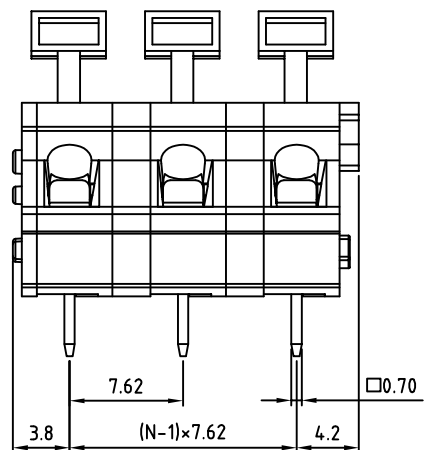
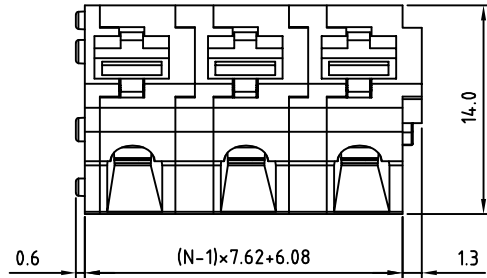
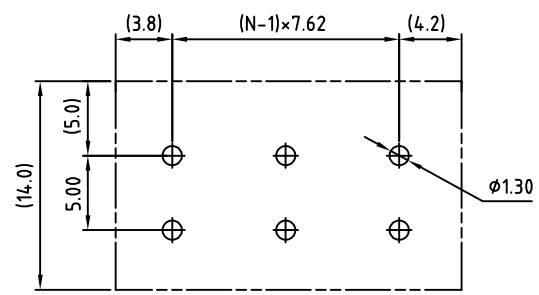


| SIGN | DATE | DESCRIPTION | APPROVER |
|--|------|-------------|----------|
| THIS IS CAD DRAWING, DO NOT REVISE MANUALLY!!! | | | |



N=Number of poles



RECOMMENDED PCB LAYOUT

THESE DRAWINGS AND SPECIFICATIONS ARE THE PROPERTY OF ON-SHORE TECHNOLOGY, INC. AND SHALL NOT BE REPRODUCED, COPIED OR USED IN ANY MANNER WITHOUT THE PRIOR WRITTEN CONSENT OF ON-SHORE TECHNOLOGY, INC.

Material

- Terminal body(Contact pin) : Brass
- Surface of solder tail : Tin plated
- Wire guard : Stainless steel
- Insulator (housing): Thermoplastic (UL94V-0)

Electrical

- Voltage rating: 300V
- Current rating: 15A
- Wire range:
 - Solid wire(AWG): 12-28
 - Stranded wire(AWG): 12-28
- Wire strip length: 6-7mm
- Withstanding Voltage: 1.6KV
- Operating temperature: -30°C to +105°C
- Soldering temperature: 250°C±10°C/5 Sec

cULus

RoHS Compliant

PART NUMBER:

OSTHTXX5080

No. of Poles:

- 01 1 Pole (basic block)
- 02 2 Poles
- etc. available in 1-12 Poles

COLOR

- 0: Black
- 5: Green
- 6: Blue
- 8: Grey (Standard)



| | | | | | |
|----------|----------------------|----------------------|----------------------|-------------------------|---|
| TITLE | | OSTHT-7.62 Series | | | |
| PART NO. | | OSTHTXX5080 | | DWG NO. OSTHTXX5080.DWG | |
| APPROVED | CHECKED | DESIGNED | DRAWN | CUST NO. | Tolerance |
| | Marvin 2006.10.10 | Marvin 2006.10.10 | Marvin 2006.10.10 | ⊕ | X. ±0.50 X.X ±0.30 X.XX ±0.10 X* ±1* |
| | | | | UNIT: mm | SCALE: NONE |
| | | | | SHEET: 01/01 | REV.: B |