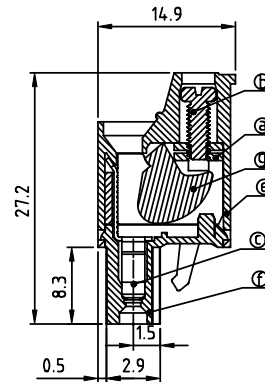
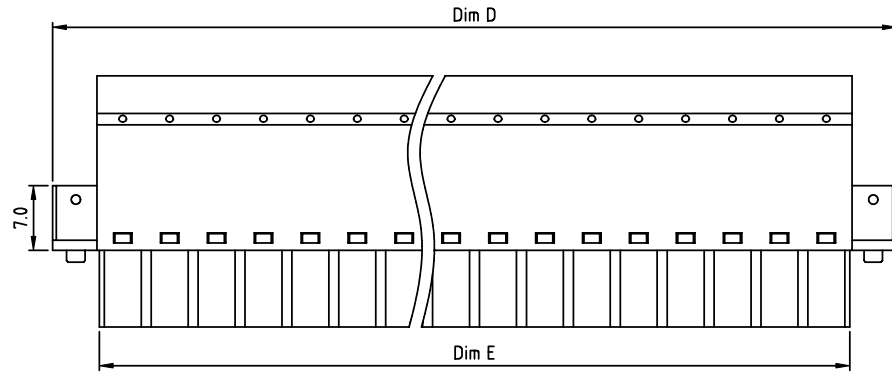
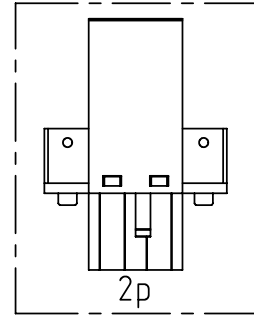
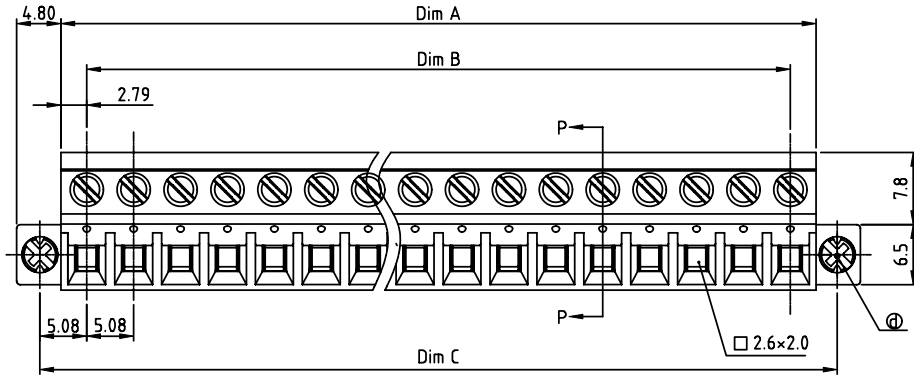


PRODUCT NUMBER	PITCH
VMxx55x300J0G	5.08 mm



SECTION P-P

Material:

- Item①Clamp: Steel zinc plated
 - Item②Terminal screw: Steel Zinc plating "-" slot type
 - Item③Female contact: High conductivity copper Tin plated
 - Item④With flange screw: Steel zinc plated M2.5 "+/-" combination type
 - Item⑤Terminal (top body): Thermoplastic (UL94V-0)
 - Item⑥Terminal (bottom body): Thermoplastic (UL94V-0)
 - Item⑦Clampage: Steel Zinc plated
- Electrical cULus
- Voltage rating: 300VAC
 - Current rating: 20A
 - Wire range: 0.34-2.5mm²
 - Solid wire(AWG): 12-22
 - Stranded wire(AWG): 12-22
 - Torque: 3.5Lb-In
 - Screw: M2.5
 - Wire strip length: 6-7mm
 - Withstanding Voltage: 1.6KV
 - Operating temperature: -40°C to +115°C
 - Safety approval: cULus

Dimension

Dim A	N × 5.08+0.50
Dim B	(N-1) × 5.08
Dim C	(N-1) × 5.08+10.16
Dim D	N × 5.08+10.1
Dim E	N × 5.08

N=Number of poles

Poles	Tolerance
2p-6p	±0.20
7p-12p	±0.25
13p-18p	±0.30
19p-24p	±0.40

PART NO.: VM xx 55 x 3 00J0 G

	Color	RoHS compliant
Solid block	0 Black (RAL9005)	(lead<4%) In copper Alloy
No. of poles	2 Red (RAL3001/D)	
02 2 poles	3 Orange(RAL2011/P)	
03 3 poles	4 Yellow(RAL1018/A)	
...	5 Green(RAL6018/T)	
24 24 poles	6 Blue (RAL5015/A)	
	8 Grey(RAL7035/D)	
	9 White(RAL1102)	
	C Green(RAL6018/U)	

mat'l. code		surface ASME Y14.5	tolerance ASME Y14.5	projection	product family TERMINAL BLOCK
ltr	ecn no	dr	date	tolerances unless otherwise specified	title TERMINAL BLOCK
				angles X°±1°	scale PLUGGABLE PLUG, WITH FLANGE, LOW PROFILE
				dr	EVIN ZHONG 042114
				enr	EVIN ZHONG 042114
				chr	HANKE FENG 042114
				appd	SHI JUN 042114
sheet index	revision sheet	A	1		sheet 1 of 1 size VMxx55x300J0G A4
					type CUSTOMER Drawing