

Customer Information Sheet

DRAWING No.: D3083-XX

SHEET 2 OF 2

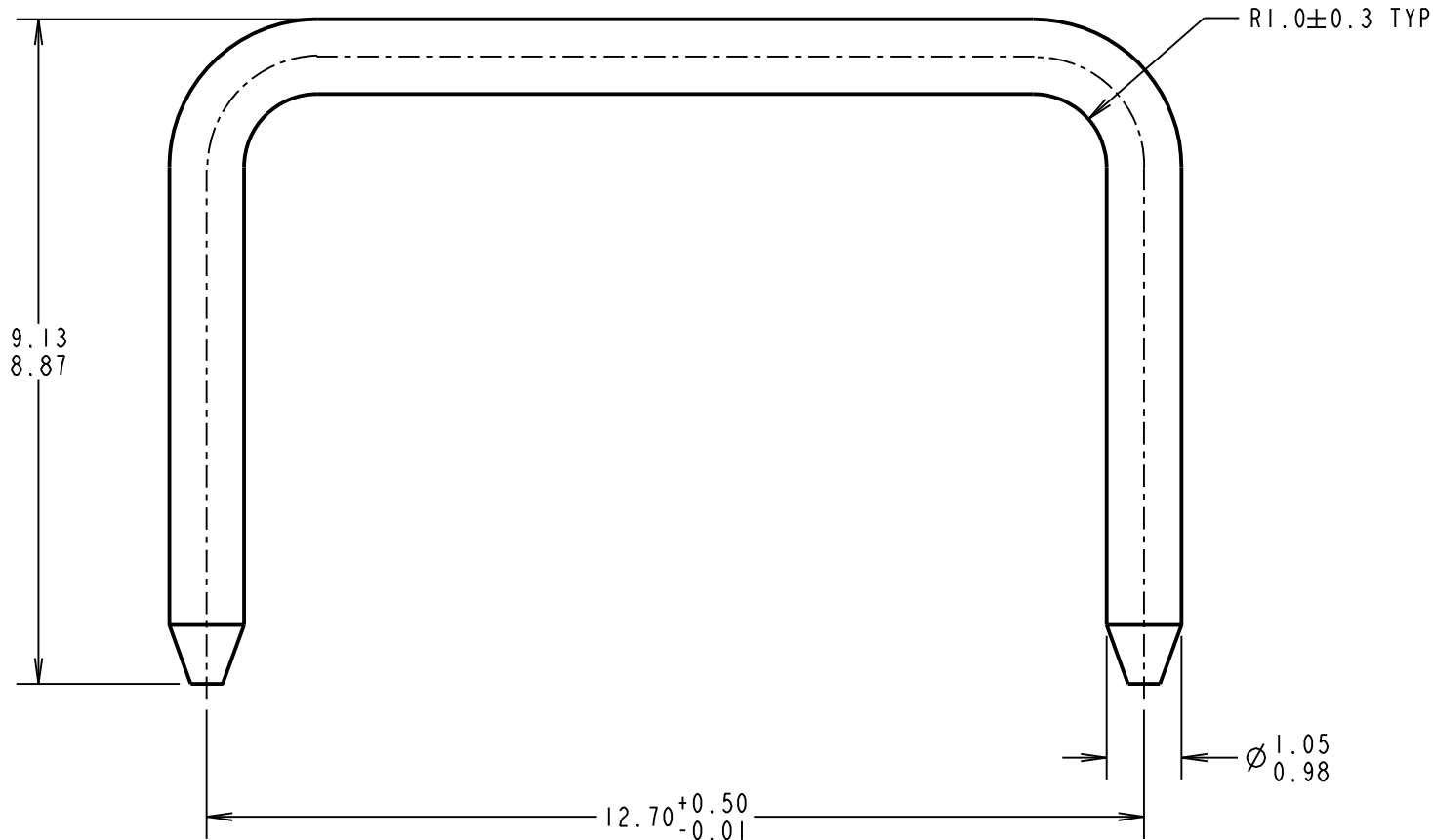
IF IN DOUBT - ASK

©

NOT TO SCALE

THIRD ANGLE PROJECTION

ALL DIMENSIONS IN mm



ORDER CODE:
D3083-XX
 FINISH:
 01 = 100% MATTE TIN
 05 = GOLD FLASH
 46 = 100% BRIGHT TIN

| | | | |
|---------------------------|------|------------|--------|
| SB | 10 | 18.12.12 | 11891 |
| NAME | ISS. | DATE | C/NOTE |
| APPROVED: | | S. BENNETT | |
| CHECKED: | | S. FLOWER | |
| DRAWN: | | C. HANSEN | |
| CUSTOMER REF.: | | | |
| ASSEMBLY DRG: D3089-XX | | | |

| PART No. | FINISH |
|----------|---|
| D3083-01 | 2.54 μ 100% MATTE TIN OVER 0.76 μ NICKEL UNDERCOAT |
| D3083-05 | GOLD FLASH OVER 0.76 μ NICKEL UNDERCOAT |
| D3083-46 | 2.54 μ 100% BRIGHT TIN OVER 0.76 μ NICKEL UNDERCOAT |

HARWIN

www.harwin.com
 technical@harwin.com

THIS DRAWING AND ANY INFORMATION OR DESCRIPTIVE MATTER SET OUT HEREON ARE CONFIDENTIAL AND COPYRIGHT PROPERTY OF THE HARWIN GROUP AND MUST NOT BE DISCLOSED, LOANED, COPIED OR USED FOR MANUFACTURING, TENDERING OR FOR ANY OTHER PURPOSE WITHOUT THEIR WRITTEN PERMISSION.

TOLERANCES
 X. = ± 1 mm
 X.X = ± 0.25 mm
 X.XX = ± 0.10 mm
 X.XXX = ± 0.01 mm
 ANGLES = $\pm 5^\circ$
 UNLESS STATED

MATERIAL:

BRASS C2600

FINISH: SEE ABOVE

S/AREA:

mm²

TITLE:

1mm SHORTING LINK

DRAWING NUMBER:

D3083-XX

SHT
 2
 OF
 2