

SPRING-LOADED CONNECTORS

SERIES 319, 399 • .100" GRID CONCAVE FACE TARGET CONNECTORS FOR SPRING-LOADED ASSEMBLIES • SINGLE ROW STRIPS

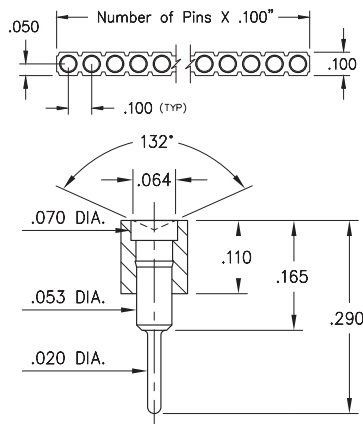


FIG. 1

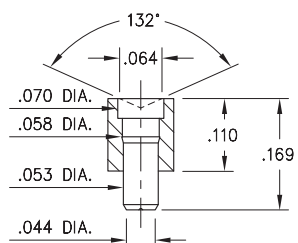


FIG. 2

Coplanarity .005". For Pin counts >10 positions, consult Technical Support.

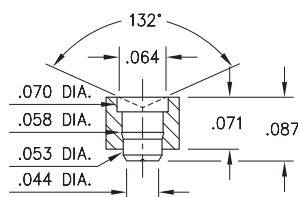


FIG. 3

Coplanarity .005". For Pin counts >10 positions, consult Technical Support.

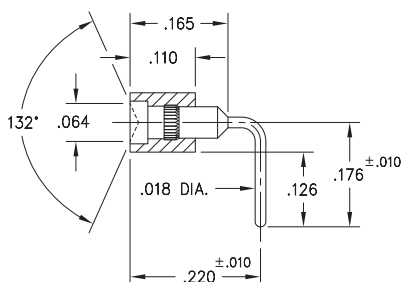
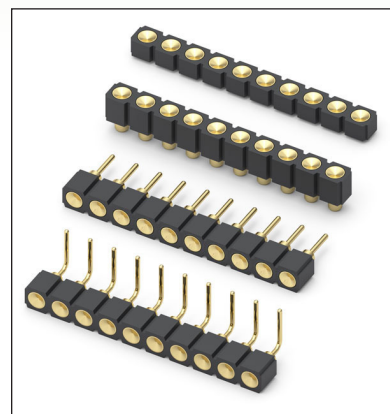


FIG. 4

- Series 319 and 399 Spring Target Connectors, supplied in single row strips. Available in SMT and right angle through-hole termination configurations
- Target Connectors provide an excellent gold-plated conductive mating surface for spring loaded connectors. These series are offered with a concave face for making contact with our standard .042" dia. spring pin plungers
- Target connectors use MM #1948, #1955, #1957 and #1960 pins. See pages 223.1, 223.2 and 223.3 for details
- Insulators are high temperature thermoplastic



ORDERING INFORMATION

	Series 319...006	Standard Solder Tails
FIG. 1	319-10-1	-00-006000 Specify number of pins 01-64
FIG. 2	Series 319...007	Surface Mount
	319-10-1	-30-007000 Specify number of pins 01-64
FIG. 3	Series 319...055	Low Profile Surface Mount
	319-10-1	-30-055000 Specify number of pins 01-64
FIG. 4	Series 399...007	Right Angle Solder Tails
	399-10-1	-10-007000 Specify number of pins 01-64
<div style="display: flex; justify-content: space-around; align-items: center;"> <div style="border: 1px solid black; padding: 5px; background-color: #90EE90;">RoHS-2 2011/65/EU</div> <div style="border: 1px solid black; border-radius: 50%; padding: 5px;">XX=Plating Code See Below</div> <div style="border: 1px solid black; border-radius: 50%; padding: 5px;">For Electrical, Mechanical & Environmental Data, See page 264</div> </div>		
SPECIFY PLATING CODE XX=		
Pin Plating	10 ◆	10 μ" Au

