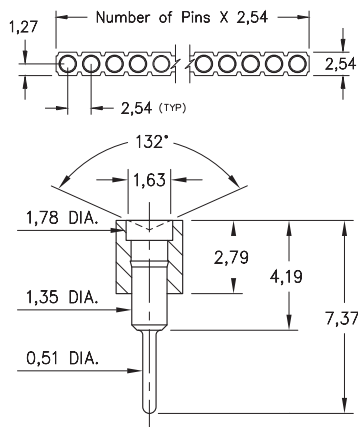
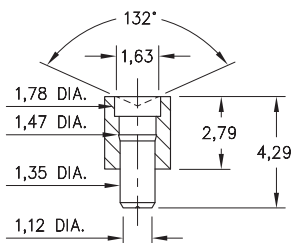


# SPRING-LOADED CONNECTORS

## SERIES 319, 399 • 2,54 GRID CONCAVE FACE TARGET CONNECTORS FOR SPRING-LOADED ASSEMBLIES • SINGLE ROW STRIPS

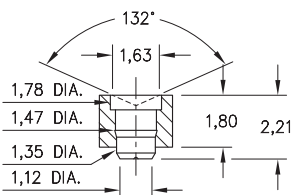


**FIG. 1**



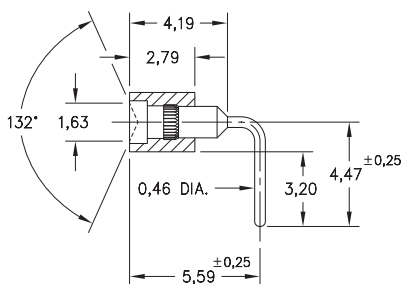
Coplanarity 0,13. For Pin counts >10 positions, consult Technical Support.

**FIG. 2**



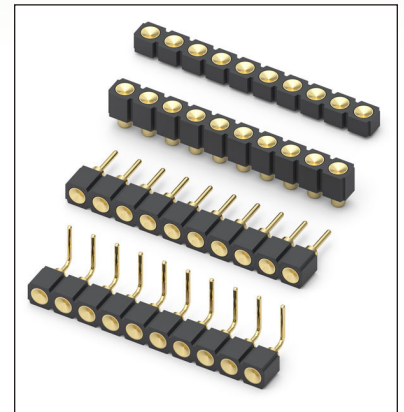
Coplanarity 0,13. For Pin counts >10 positions, consult Technical Support.

**FIG. 3**



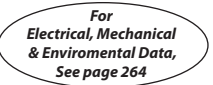




**FIG. 4**

- Series 319 and 399 Spring Target Connectors, supplied in single row strips. Available in SMT and right angle through-hole termination configurations
- Target Connectors provide an excellent gold-plated conductive mating surface for spring loaded connectors. These series are offered with a concave face for making contact with our standard 1,07 dia. spring pin plungers
- Target connectors use MM #1948, #1955, #1957 and #1960 pins. See pages 223.1, 223.2 and 223.3 for details
- Insulators are high temperature thermoplastic



### ORDERING INFORMATION

	Series 319...006	Standard Solder Tails
<b>FIG. 1</b>	319-10-1	-00-006000 Specify number of pins 01-64
<b>FIG. 2</b>	Series 319...007	Surface Mount
	319-10-1	-30-007000 Specify number of pins 01-64
<b>FIG. 3</b>	Series 319...055	Low Profile Surface Mount
	319-10-1	-30-055000 Specify number of pins 01-64
<b>FIG. 4</b>	Series 399...007	Right Angle Solder Tails
	399-10-1	-10-007000 Specify number of pins 01-64
  		
<b>SPECIFY PLATING CODE XX=</b>		10 
Pin Plating 		0,25µm Au