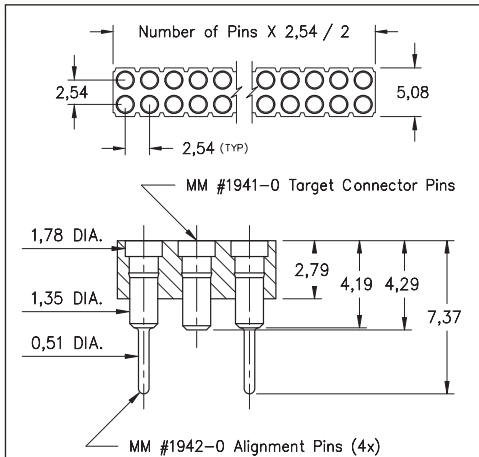
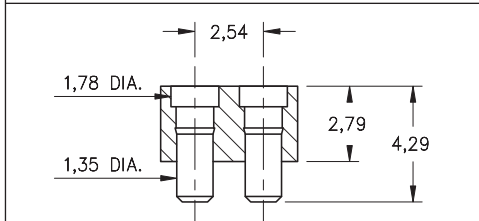


# SPRING-LOADED CONNECTORS

## SERIES 419, 499 • 2,54 GRID TARGET CONNECTORS FOR SPRING-LOADED ASSEMBLIES • DOUBLE ROW STRIPS

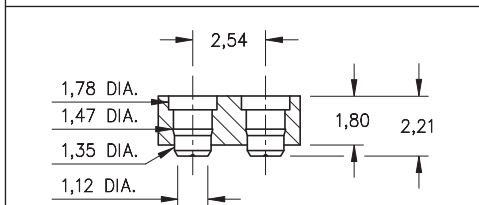


**FIG. 1**



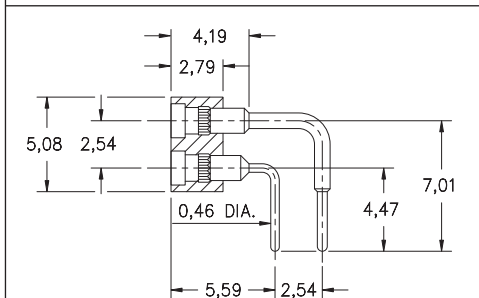
Coplanarity 0,13. For Pin counts >20 positions, consult Technical Support.

**FIG. 2**



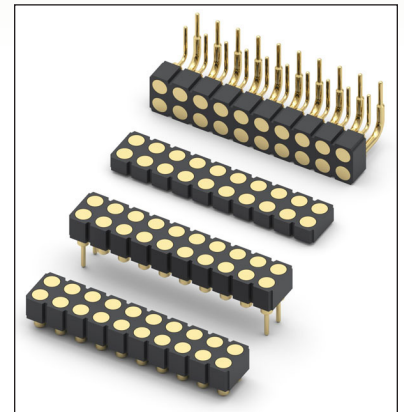
Coplanarity 0,13. For Pin counts >20 positions, consult Technical Support.

**FIG. 3**



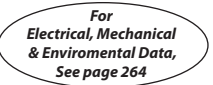




**FIG. 4**

- Series 419 and 499 Spring Target Connectors, supplied in double row strips. Available in SMT and right angle through-hole termination configurations
- Target Connectors provide an excellent gold-plated conductive mating surface for spring loaded connectors. These series are offered with a flat face for making contact with our standard 1,07 dia. spring pin plungers
- Target connectors use MM #1940, #1941/1942, #1953 and #1954 pins. See pages 218 & 223.3 for details
- Insulators are high temperature thermoplastic



### ORDERING INFORMATION

|  |  |
|--|--|
| <b>FIG. 1</b>  | <b>Series 419...042</b> <b>Surface Mount w/ Alignments Pins</b>                          |
|  | 419-10-2__-30-042000<br>Specify number of pins      06-72                                |
| <b>FIG. 2</b>  | <b>Series 419...041</b> <b>Surface Mount</b>   |
|  | 419-10-2__-30-041000<br>Specify number of pins      04-72                                |
| <b>FIG. 3</b>  | <b>Series 419...054</b> <b>Low Profile Surface Mount</b>                                 |
|  | 419-10-2__-30-054000<br>Specify number of pins      04-72                                |
| <b>FIG. 4</b>  | <b>Series 499...008</b> <b>Right Angle Solder Tails</b>                                  |
|  | 499-10-2__-10-008000<br>Specify number of pins      02-64                                |
|    |  |
| <b>SPECIFY PLATING CODE XX=</b>  | 10  |
| Pin Plating   | 0,25µm Au  |