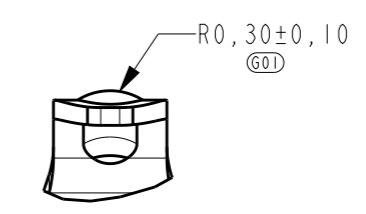
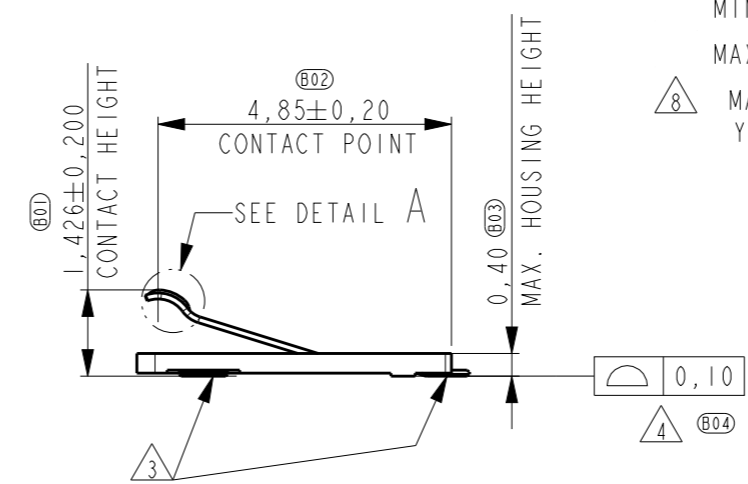
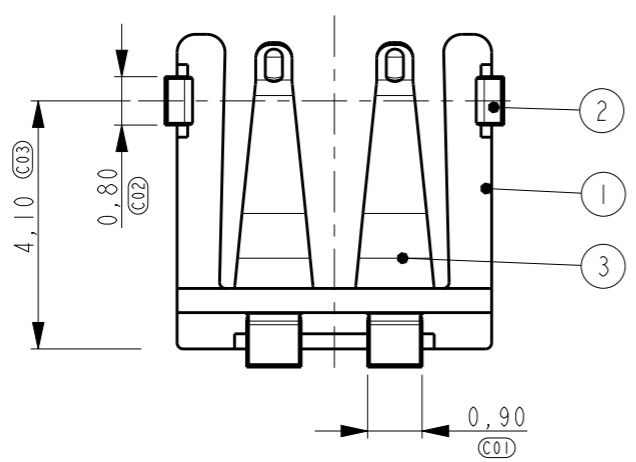
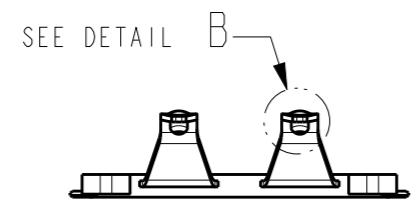
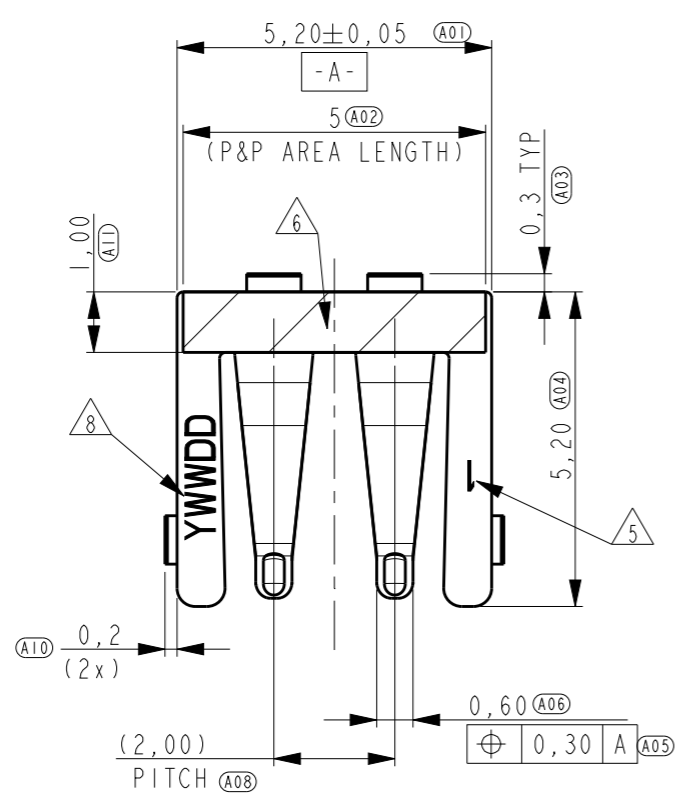
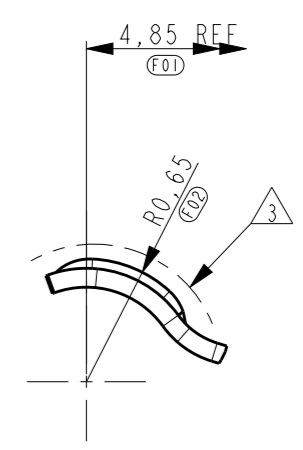


THIS DRAWING IS UNPUBLISHED. RELEASED FOR PUBLICATION
 © COPYRIGHT - BY - ALL RIGHTS RESERVED.

LOC	DIST	REVISIONS			
P	LTR	DESCRIPTION	DATE	DWN	APVD
ES	-	A	INITIAL RELEASE	05SEP2013	RW SY



DETAIL B
SCALE 25:1



DETAIL A
SCALE 25:1

- NOTES:
- P.N. AS SHOWN 2246092-2.
 - DRAWING REPRESENTS PART VERSION VI.
 - PLATING: - 1,27µm MIN. NICKEL ALL OVER,
- 0,3µm MIN GOLD ON CONTACT POINTS (INDICATED BY DASHED LINE),
- GOLD FLASH ON SOLDER TAILS
 - COPLANARITY OF SOLDER SURFACES 0,10 MAX.
 - MARKING: CAVITY ID, RECESSED.
 - PICK & PLACE SURFACE DEFINED BY HATCHED AREA.
 - CONTACT WORKING HEIGHT 0,70mm±0,30mm,
MIN FORCE 0,20N AT 1,00mm,
MAX FORCE 0,80N AT 0,40mm MEASURED FROM SOLDER SURFACE UP.
 - MARKING: DATE CODE
Y=YEAR, WW=WEEK, DD=DAY&SHIFT

ITEM NO.	DESCRIPTION	MATERIAL	FINISH
3	CONTACT	STAINLESS STEEL	GOLD PLATED
2	SOLDER TAB	STAINLESS STEEL	GOLD PLATED
1	HOUSING	PLASTIC, GF	-

THIS DRAWING IS A CONTROLLED DOCUMENT.

DIMENSIONS: mm	TOLERANCES UNLESS OTHERWISE SPECIFIED: 0 PLC ±0,20 1 PLC ±0,10 2 PLC ±0,05 3 PLC ± 4 PLC ± ANGLES ±-	DWN 05SEP2013 RAY WANG CHK 05SEP2013 WENKE HE APVD 05SEP2013 STEVEN YAO	TE Connectivity NAME Board to Board Connector	
MATERIAL -	FINISH -	PRODUCT SPEC 108-19386	SIZE A3	CAGE CODE 00779
		APPLICATION SPEC -	DRAWING NO C-2246092	RESTRICTED TO -
		WEIGHT -	SCALE 8:1	SHEET 1 OF 3
		Customer Drawing	REV A	

4

3

2

1

THIS DRAWING IS UNPUBLISHED.

RELEASED FOR PUBLICATION

© COPYRIGHT - BY -

ALL RIGHTS RESERVED.

LOC
ESDIST
-

REVISIONS

P	LTR	DESCRIPTION	DATE	DWN	APVD
-	-	SEE SHEET 1	-	-	-

Diagram showing the recommended PWB lay-out on the solder side. It features two rectangular components on a horizontal line. Dimensions include: 1,10 (001) for the distance from the left edge to the first component; 2,00 (002) PITCH between the two components; 1,20 (004) for the distance from the centerline to the second component; 1,10 (003) for the distance from the centerline to the top edge of the second component; 4,00 (007) for the distance from the centerline to the right edge of the second component; 0,55 (006) for the distance from the right edge of the second component to the right edge of the board; 1,00 (010) for the distance from the left edge to the first component; 3,90 (009) for the total width of the board; and 1,00 (008) for the distance from the centerline to the right edge of the board.

RECOMMENDED PWB LAY-OUT
PWB SOLDER SIDE

FRONT SIDE OF CONNECTOR HOUSING

Diagram showing the recommended PWB lay-out on the contact side. It features two rectangular components on a horizontal line. Dimensions include: 1,00 (E06) for the distance from the left edge to the first component; 0,10 (E05) for the distance from the left edge to the top edge of the first component; 1,00 (E01) for the distance from the left edge to the centerline; and 2,00 (E03) for the distance between the two components. A dashed line indicates the front side of the connector housing.

RECOMMENDED PWB LAY-OUT
PWB CONTACT SIDE

FRONT SIDE OF CONNECTOR HOUSING

THIS DRAWING IS A CONTROLLED DOCUMENT.

DWN RAY WANG 05SEP2013

CHK WENKE HE 05SEP2013

APVD STEVEN YAO 05SEP2013

PRODUCT SPEC -

APPLICATION SPEC -

WEIGHT -

Customer Drawing

DIMENSIONS:

mm

TOLERANCES UNLESS OTHERWISE SPECIFIED:

0 PLC	±0,20
1 PLC	±0,10
2 PLC	±0,05
3 PLC	±-
4 PLC	±-
ANGLES	±-

MATERIAL -

FINISH -

TE Connectivity

NAME Board to Board Connector

RESTRICTED TO -

SIZE	CAGE CODE	DRAWING NO
A3	00779	C-2246092

SCALE	SHEET	OF	REV
8:1	2	3	A

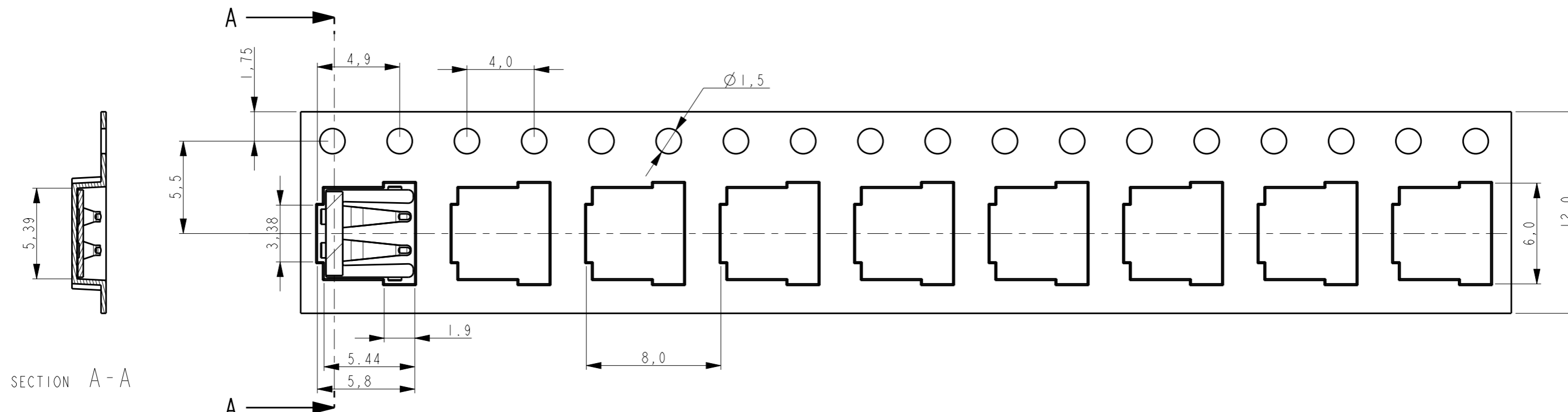
1470-19 (3/11)

THIS DRAWING IS UNPUBLISHED.

RELEASED FOR PUBLICATION

© COPYRIGHT - BY - ALL RIGHTS RESERVED.

LOC	DIST	REVISIONS			
P	LTR	DESCRIPTION	DATE	DWN	APVD
	-	SEE SHEET 1	-	-	-



SECTION A - A

NOTES:

- REEL DIMENSIONS: 330x100x12,4
- QTY PER REEL: 4000PCS.

THIS DRAWING IS A CONTROLLED DOCUMENT.		DWN RAY WANG 05SEP2013	TE Connectivity													
DIMENSIONS: mm		CHK WENKE HE 05SEP2013														
TOLERANCES UNLESS OTHERWISE SPECIFIED:		APVD STEVEN YAO 05SEP2013	NAME Board to Board Connector													
<table border="0"> <tr><td>0 PLC</td><td>±-</td></tr> <tr><td>1 PLC</td><td>±0.10</td></tr> <tr><td>2 PLC</td><td>±0.10</td></tr> <tr><td>3 PLC</td><td>±-</td></tr> <tr><td>4 PLC</td><td>±-</td></tr> <tr><td>ANGLES</td><td>±-</td></tr> </table>		0 PLC	±-	1 PLC	±0.10	2 PLC	±0.10	3 PLC	±-	4 PLC	±-	ANGLES	±-	PRODUCT SPEC -	RESTRICTED TO -	
0 PLC	±-															
1 PLC	±0.10															
2 PLC	±0.10															
3 PLC	±-															
4 PLC	±-															
ANGLES	±-															
MATERIAL -		FINISH -	APPLICATION SPEC -	SIZE A3												
		WEIGHT -	SCALE 8:1	CAGE CODE 00779												
		Customer Drawing	DRAWING NO C-2246092	SHEET 3 OF 3												
				REV A												